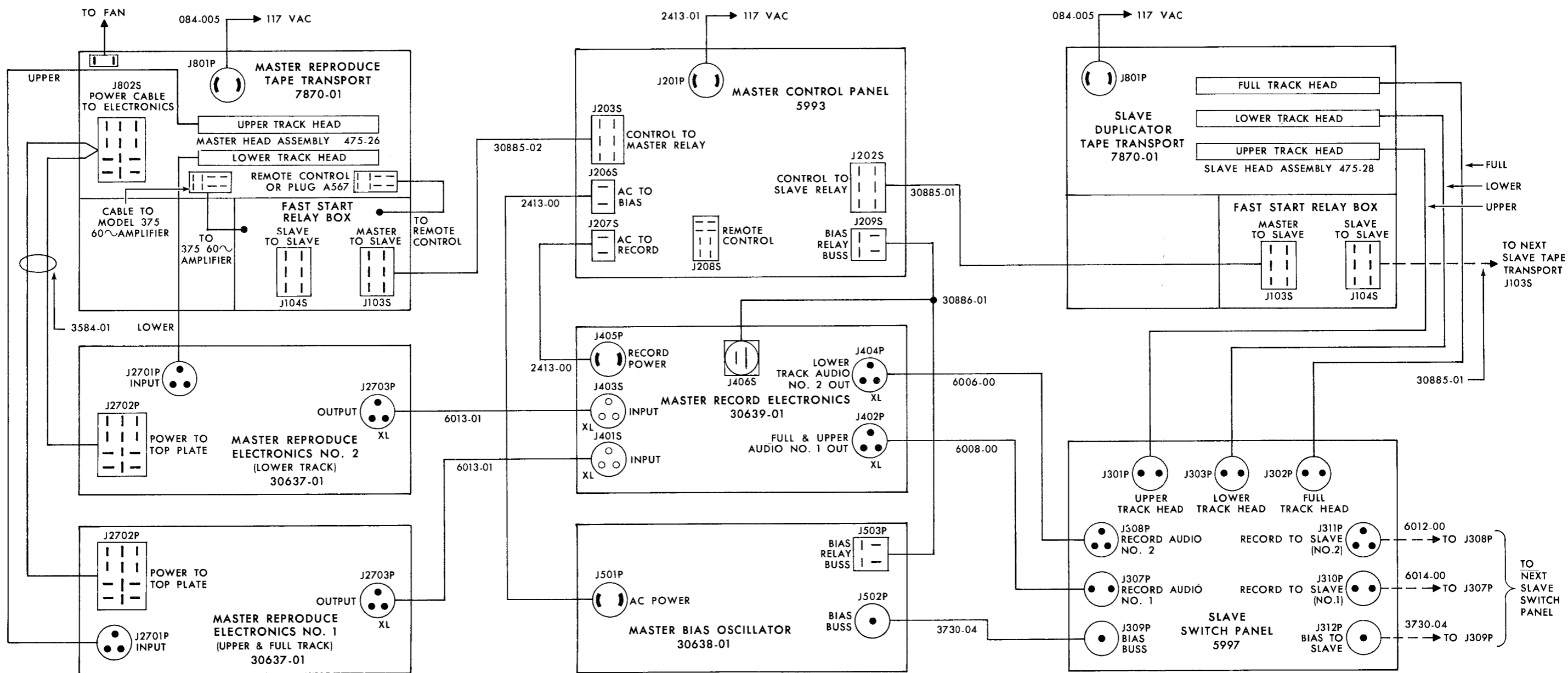
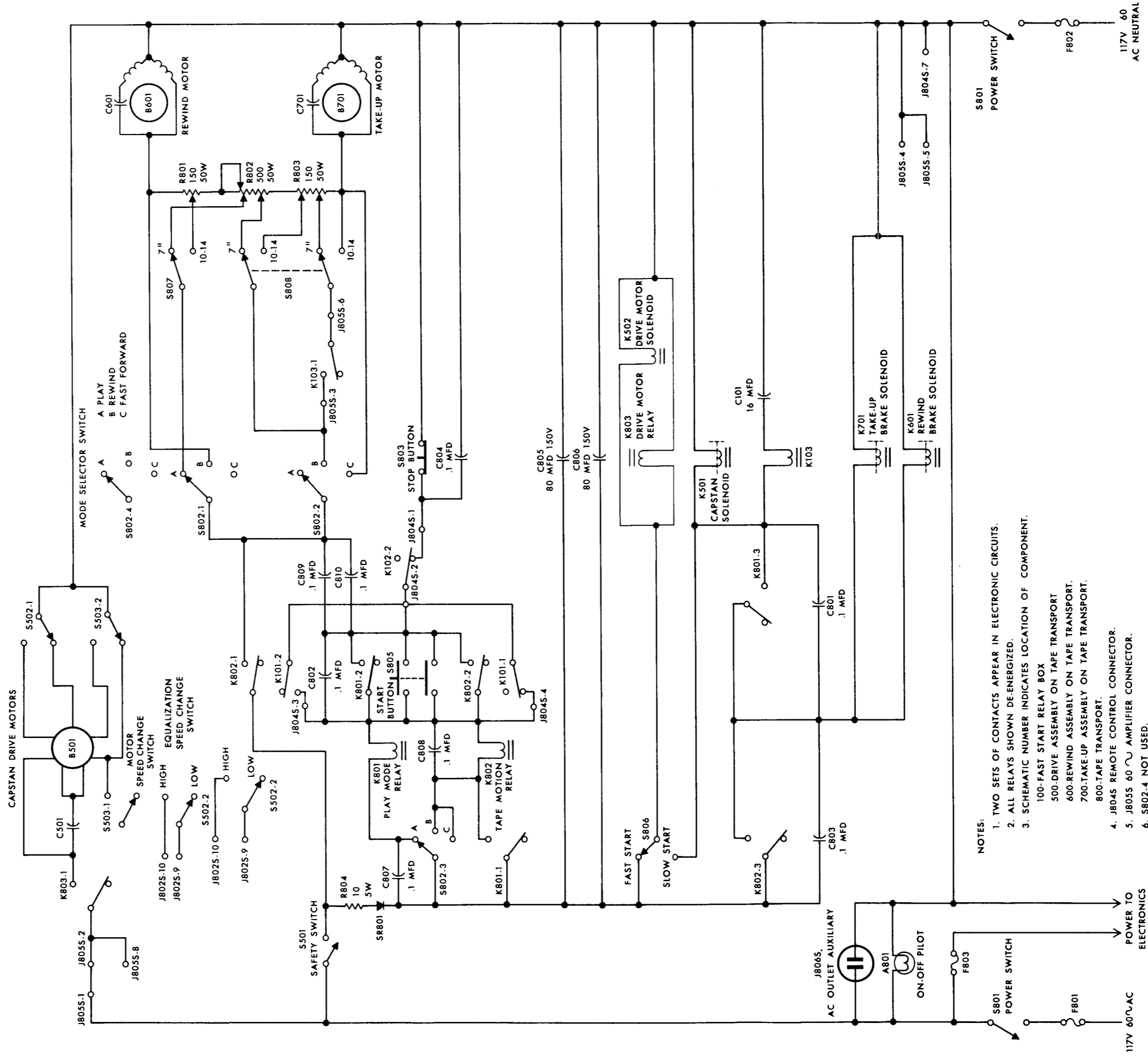


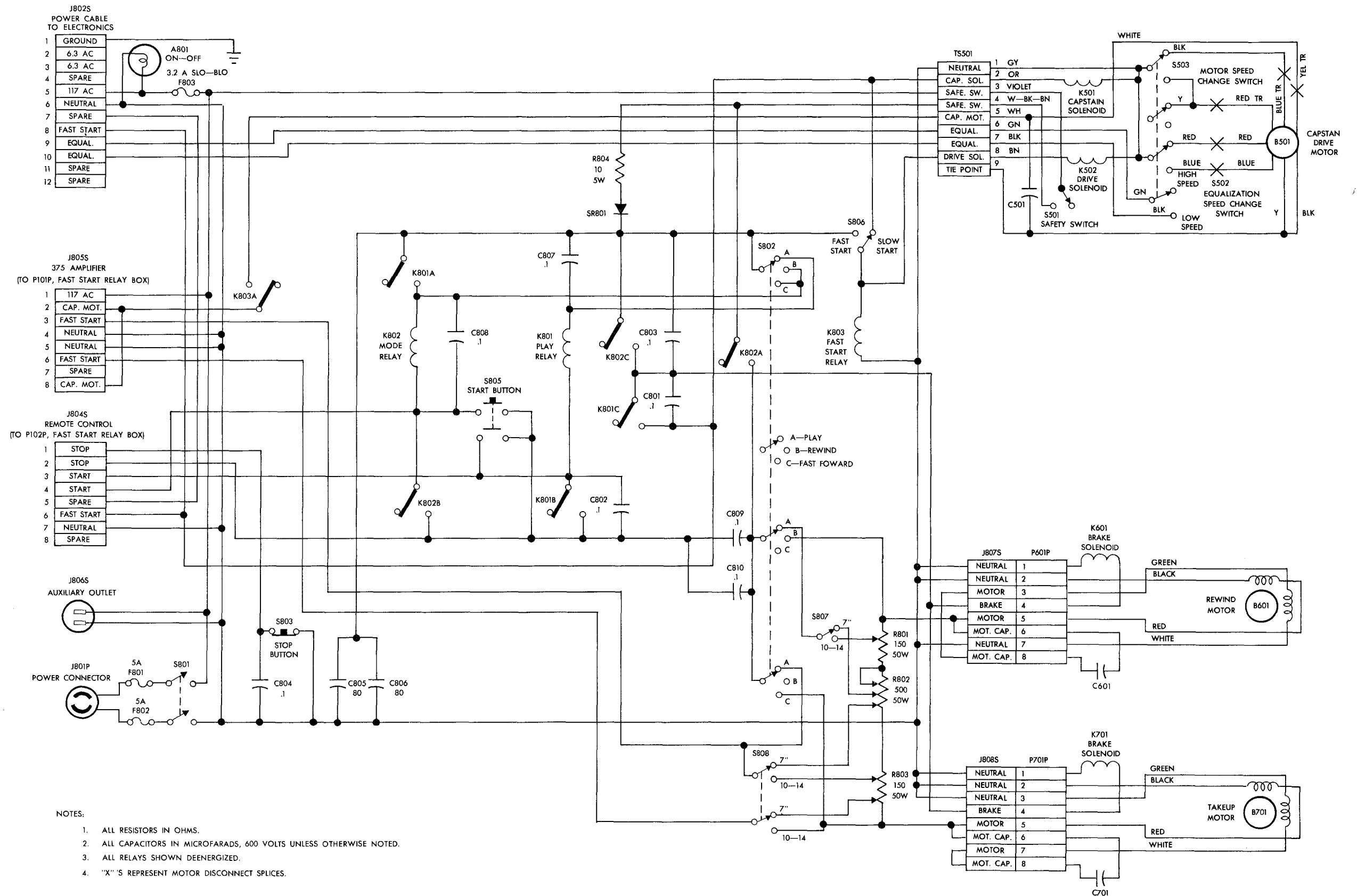
SYSTEM CABLING DIAGRAM
Figure 2-1





- NOTES:
1. TWO SETS OF CONTACTS APPEAR IN ELECTRONIC CIRCUITS.
 2. ALL RELAYS SHOWN DE-ENERGIZED.
 3. SCHEMATIC NUMBER INDICATES LOCATION OF COMPONENT.
 100-FAST START RELAY BOX
 500-DRIVE ASSEMBLY ON TAPE TRANSPORT
 600-REWIND ASSEMBLY ON TAPE TRANSPORT.
 700-TAKE-UP ASSEMBLY ON TAPE TRANSPORT.
 800-TAPE TRANSPORT.
 4. J8045 REMOTE CONTROL CONNECTOR.
 5. J8055 60 AC AMPLIFIER CONNECTOR.
 6. S802-4 NOT USED.

SCHEMATIC DIAGRAM
TAPE TRANSPORT
MODEL 3200-D TAPE DUPLICATOR SYSTEM
CATALOG NUMBER 7870-01
ED 5996



- NOTES:
1. ALL RESISTORS IN OHMS.
 2. ALL CAPACITORS IN MICROFARADS, 600 VOLTS UNLESS OTHERWISE NOTED.
 3. ALL RELAYS SHOWN DEENERGIZED.
 4. "X"'S REPRESENT MOTOR DISCONNECT SPLICES.

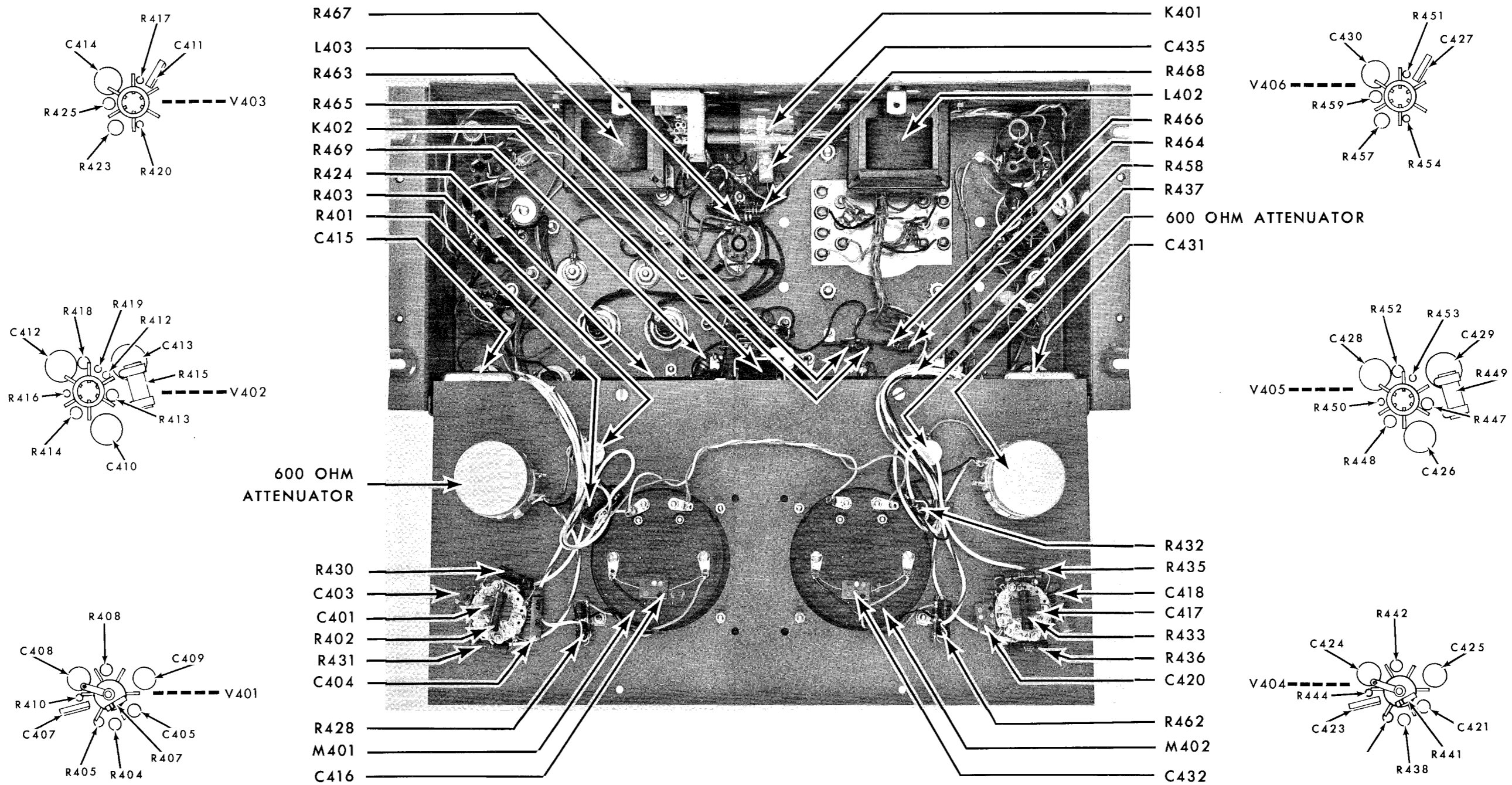
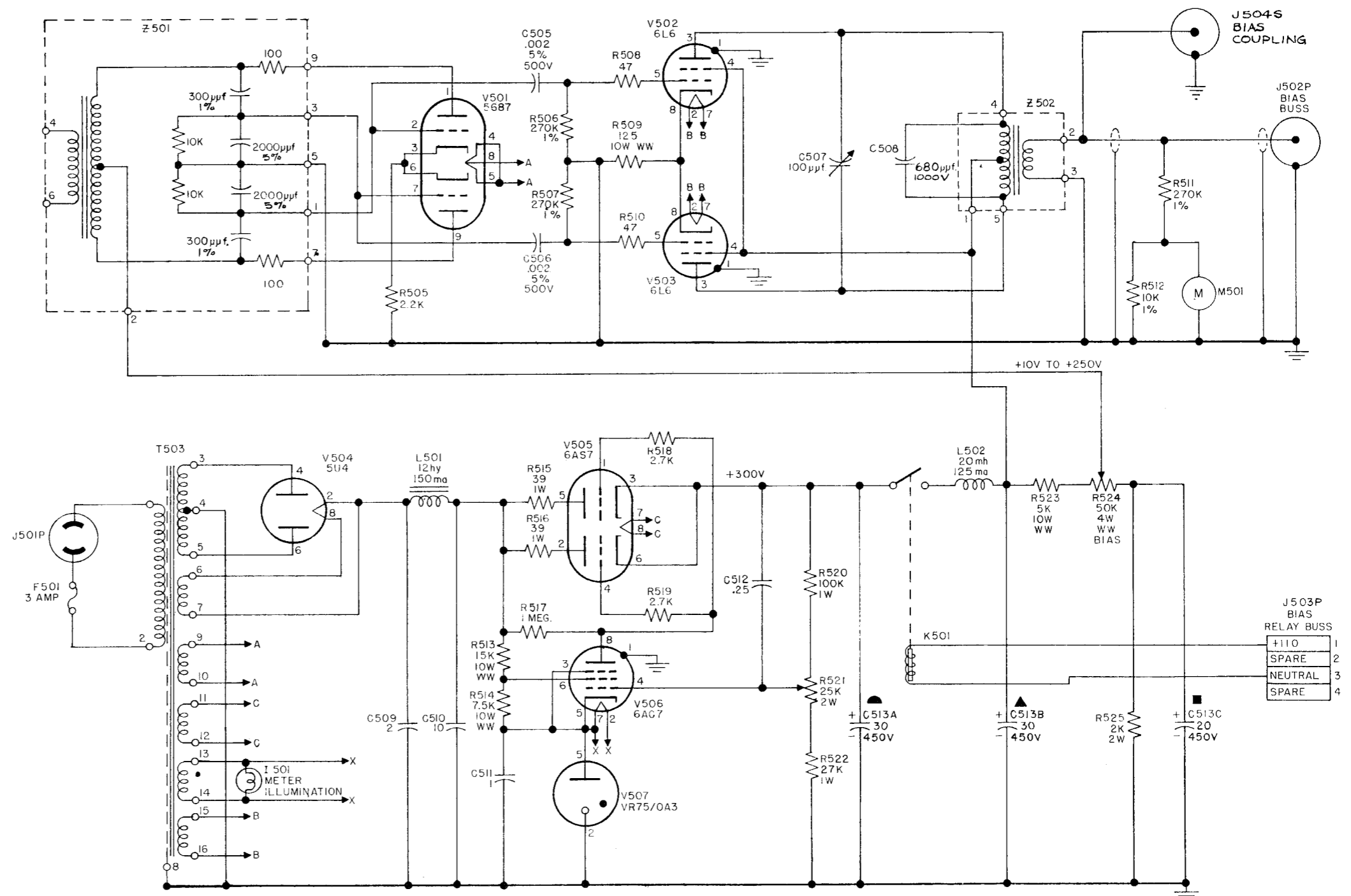


Figure 6-7

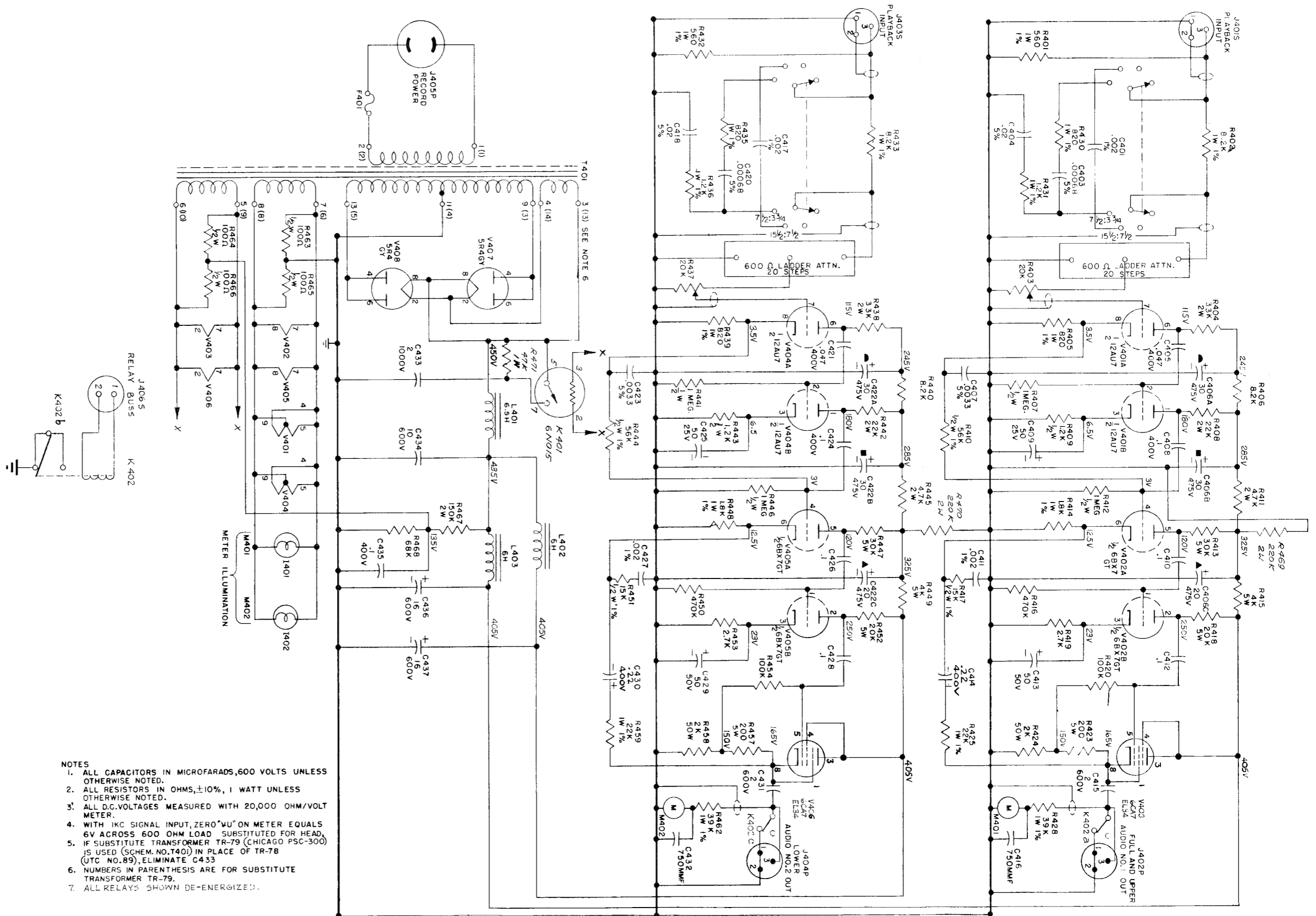
MASTER RECORD ASSEMBLY PARTS LOCATION (FOLDOUT OF INTERIOR VIEW)

SCHEMATIC DIAGRAM
 MASTER BIAS OSCILLATOR
 MODEL 3200-D TAPE DUPLICATOR SYSTEM
 CATALOG NUMBER 30638-01
 D-30641



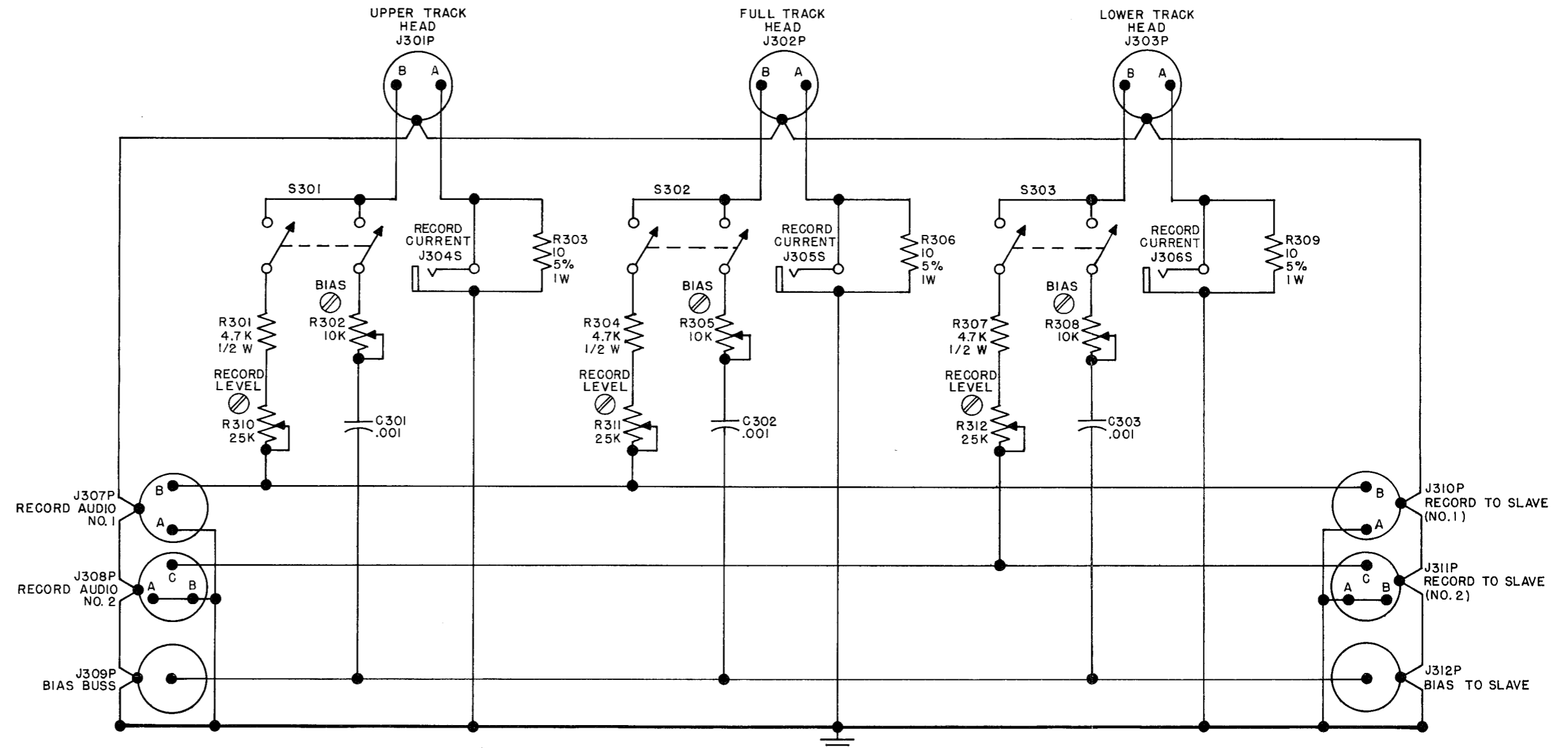
- NOTES:
- 1 ALL RESISTORS IN OHMS, ±10%, 1/2 WATT UNLESS OTHERWISE NOTED
 - 2 ALL CAPACITORS IN MICROFARADS, 600 VOLTS UNLESS OTHERWISE NOTED
 - 3 ALL RELAYS SHOWN DEENERGIZED
 - 4 VALUE OF C-508 MAY VARY.

SCHEMATIC DIAGRAM
MASTER RECORD AMPLIFIER
MODEL 3200-D TAPE DUPLICATOR SYSTEM
CATALOG NUMBER 30639-01
D-30857



- NOTES**
1. ALL CAPACITORS IN MICROFARADS, 600 VOLTS UNLESS OTHERWISE NOTED.
 2. ALL RESISTORS IN OHMS, ±10%, 1 WATT UNLESS OTHERWISE NOTED.
 3. ALL D.C. VOLTAGES MEASURED WITH 20,000 OHM/VOLT METER.
 4. WITH 1KC SIGNAL INPUT, ZERO "VU" ON METER EQUALS 6V ACROSS 600 OHM LOAD. SUBSTITUTED FOR HEAD, IF SUBSTITUTE TRANSFORMER TR-79 (CHICAGO PSC-300) IS USED (SCHEM. NO. T401) IN PLACE OF TR-78 (UTC NO. 89), ELIMINATE C433.
 5. NUMBERS IN PARENTHESIS ARE FOR SUBSTITUTE TRANSFORMER TR-79.
 6. NUMBERS IN PARENTHESIS ARE FOR SUBSTITUTE TRANSFORMER TR-79.
 7. ALL RELAYS SHOWN DE-ENERGIZED.

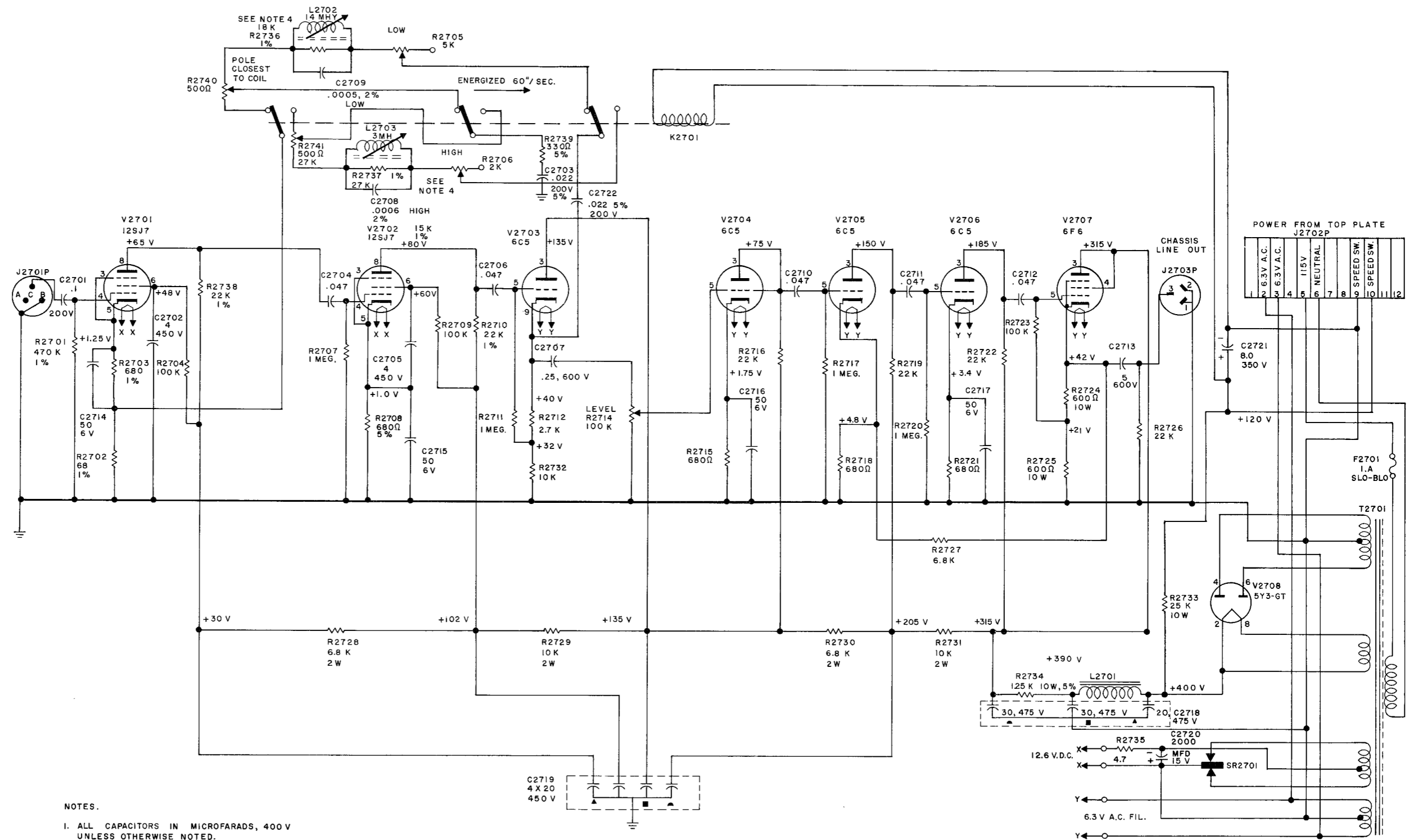
SCHEMATIC DIAGRAM
 SLAVE HEAD SWITCH PANEL
 MODEL 3200-D TAPE DUPLICATOR SYSTEM
 CATALOG NUMBER 5997.01
 EC 5997



NOTES:

1. ALL RESISTORS IN OHMS, $\pm 10\%$, 2 WATT UNLESS OTHERWISE NOTED.
2. ALL CAPACITORS IN MICROFARADS, 500 VOLTS UNLESS OTHERWISE NOTED.

SCHEMATIC DIAGRAM
REPRODUCE AMPLIFIER
MODEL 3200-D TAPE DUPLICATOR SYSTEM
CATALOG NUMBER 30637-01
D-30640



- NOTES.
1. ALL CAPACITORS IN MICROFARADS, 400 V UNLESS OTHERWISE NOTED.
 2. ALL VOLTAGES MEASURED WITH 20,000Ω PER VOLTMETER.
 3. ALL RESISTORS IN OHMS: ±10%, 1 WATT UNLESS OTHERWISE NOTED.
 4. VALUES OF R2736 & R2737 MAY VARY.