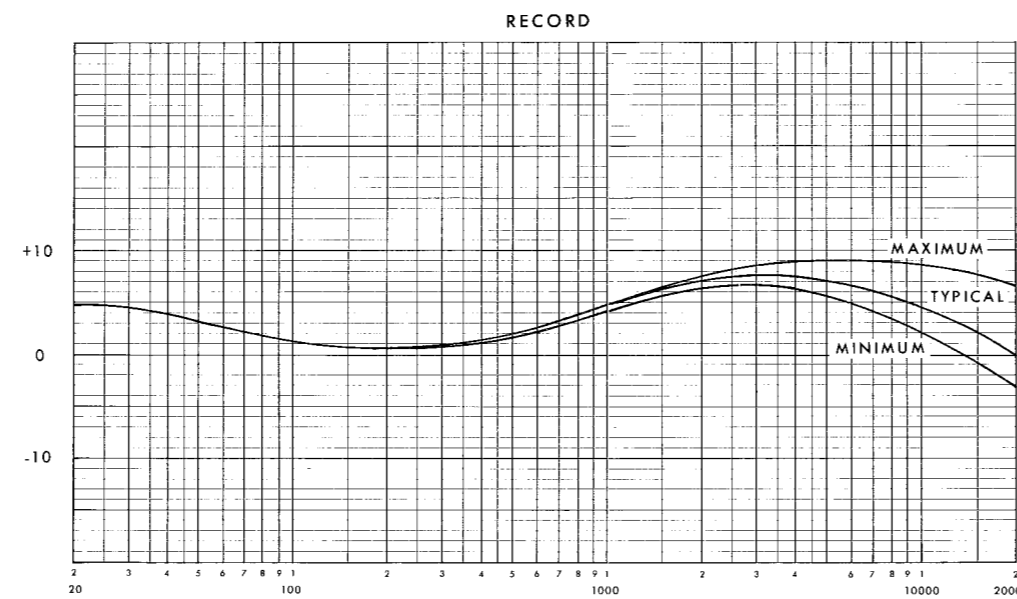
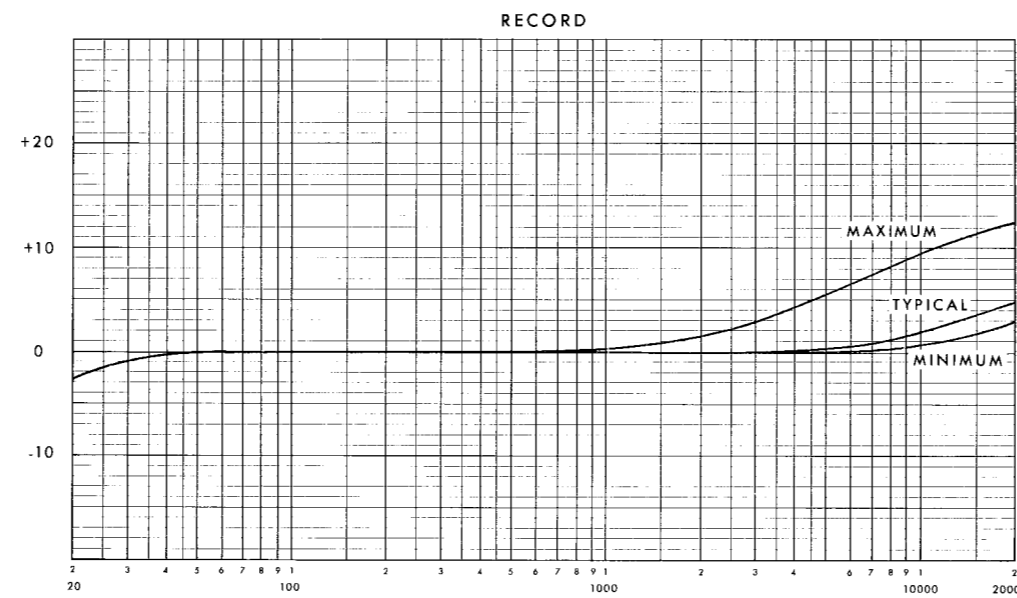
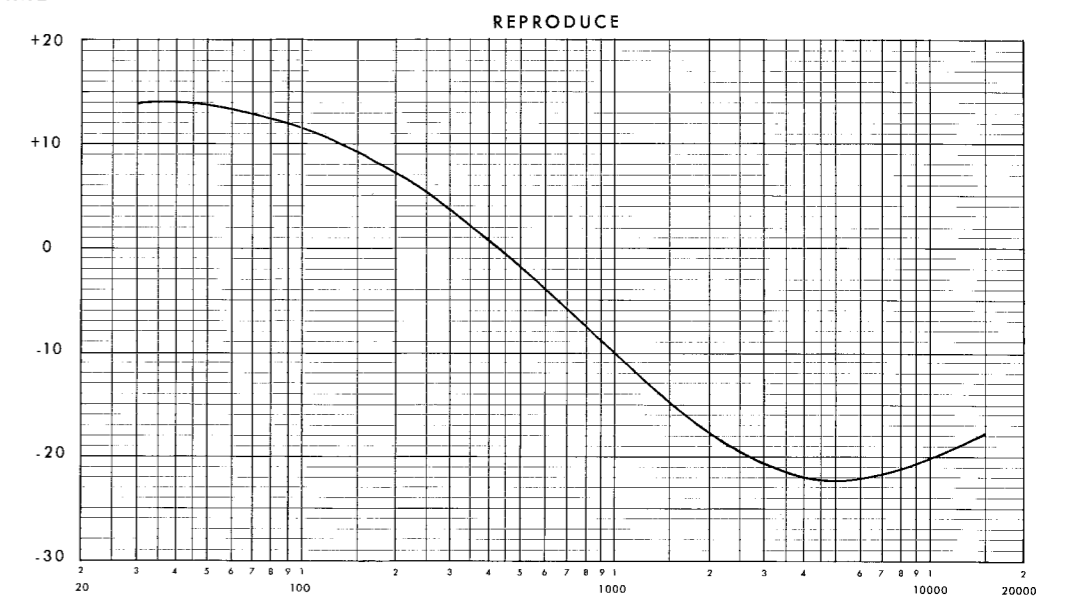


NOTE 1
RECORD CURVES SHOWN ARE APPROXIMATE AND WILL VARY WITH TAPE TO MAINTAIN FLAT OVERALL RESPONSE.

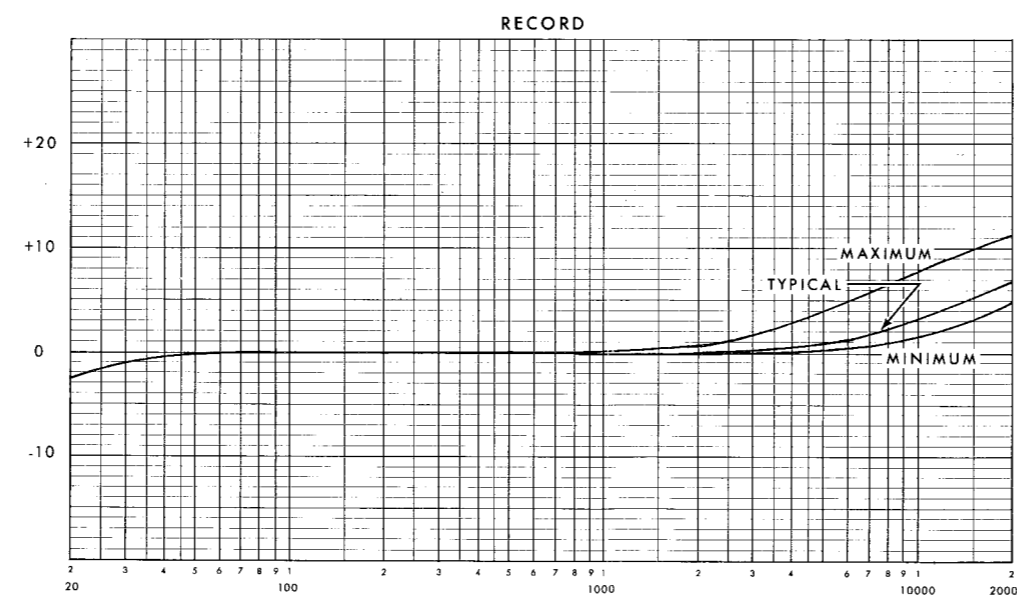
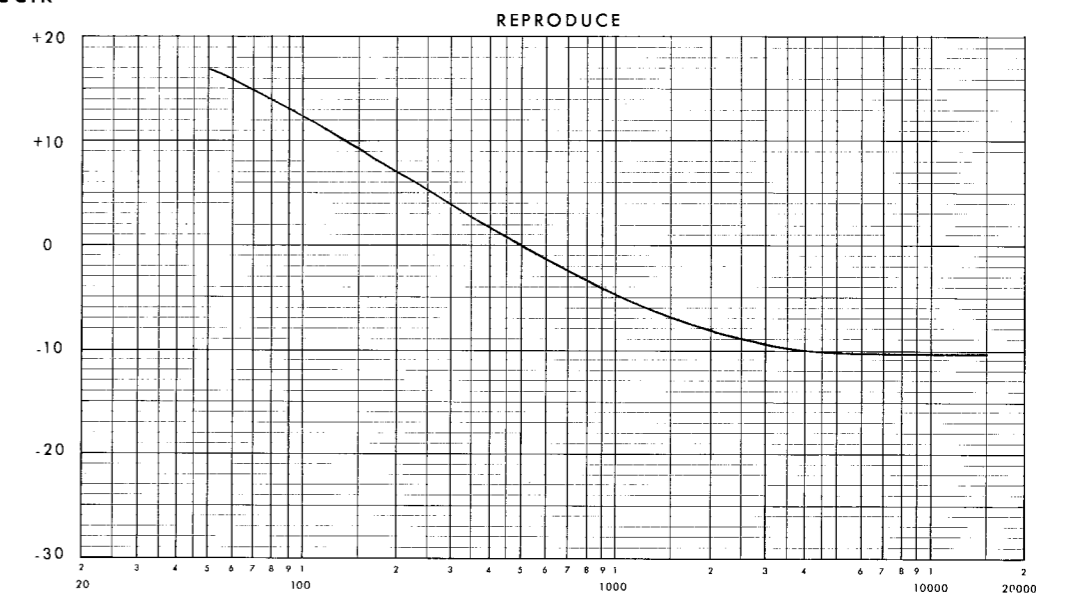
NOTE 2
USE THE 7 1/2 NAB REPRODUCE CURVE FOR THE 3 3/4 (120 μ sec)/7 1/2 NAB AND THE 7 1/2 NAB/15 NAB EQUALIZERS. FOR THE 7 1/2 NAB/15 NAB EQUALIZERS USE THE 15 NAB REPRODUCE CURVE.



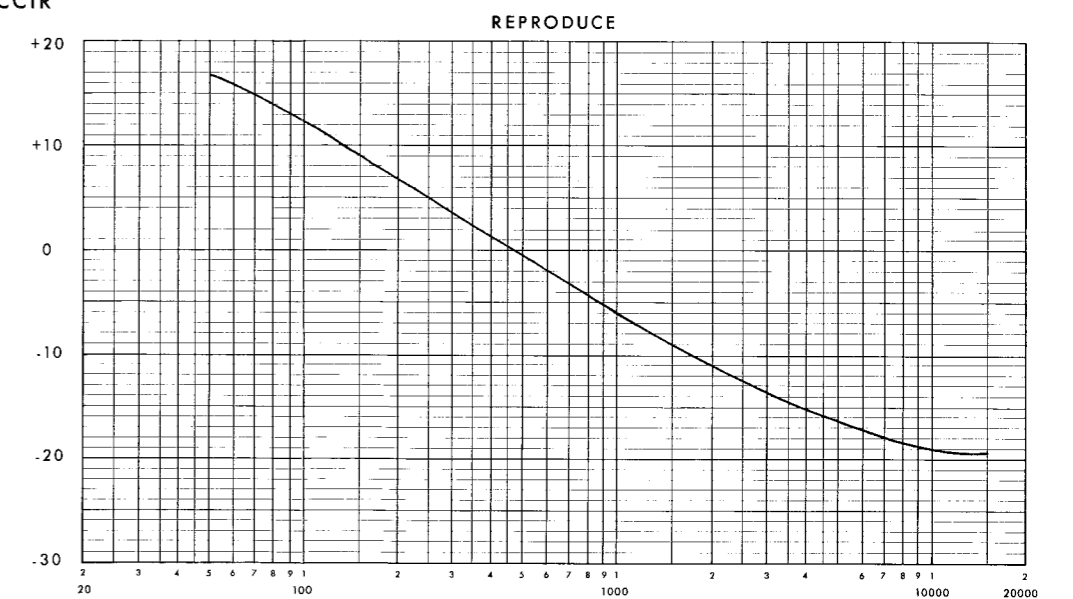
15ips AME



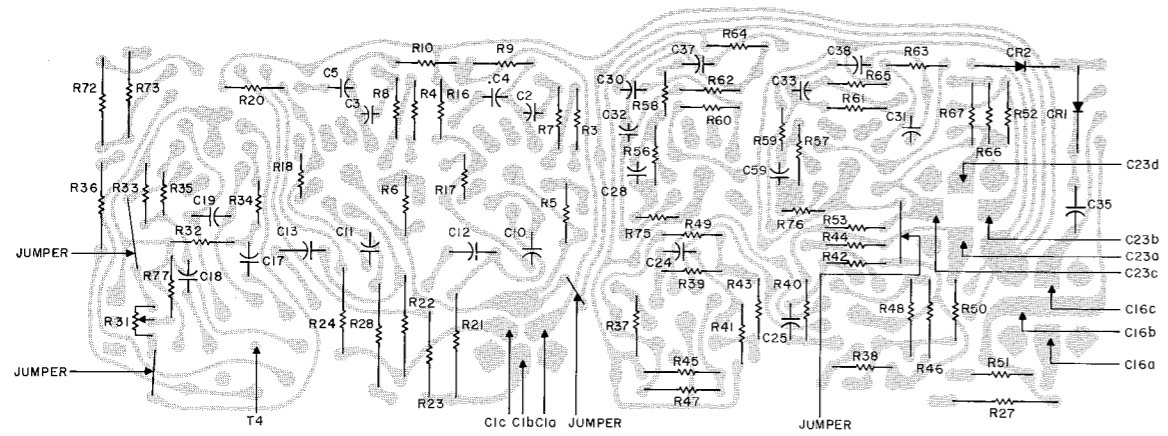
7 1/2 ips CCIR



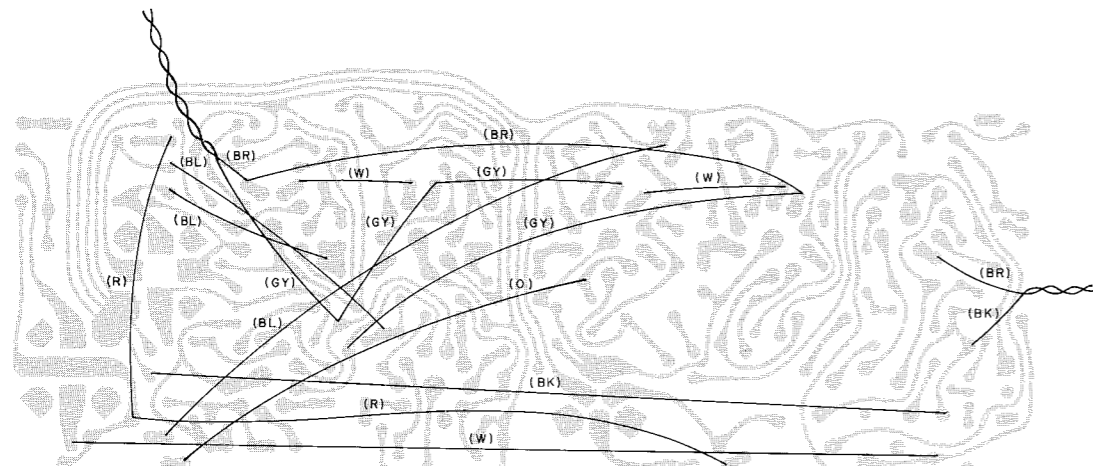
15ips CCIR



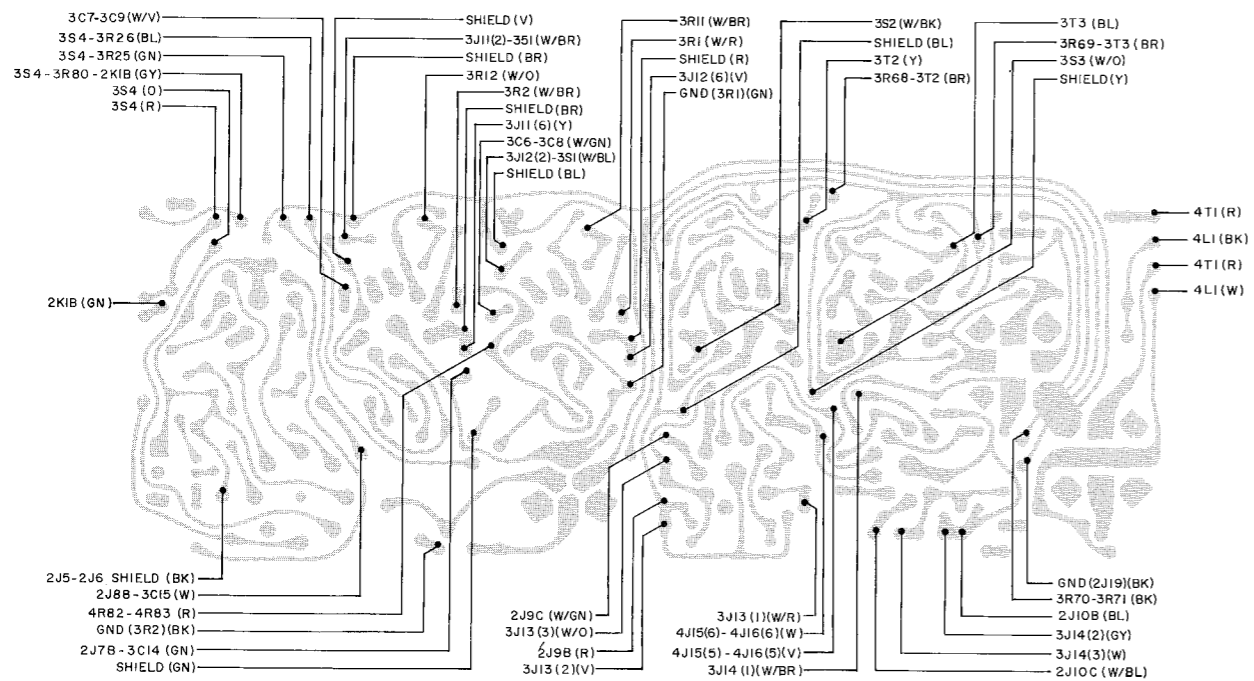
NOTES:
(SEE SHEET 1)



ETCHED BOARD COMPONENTS (TOP)*

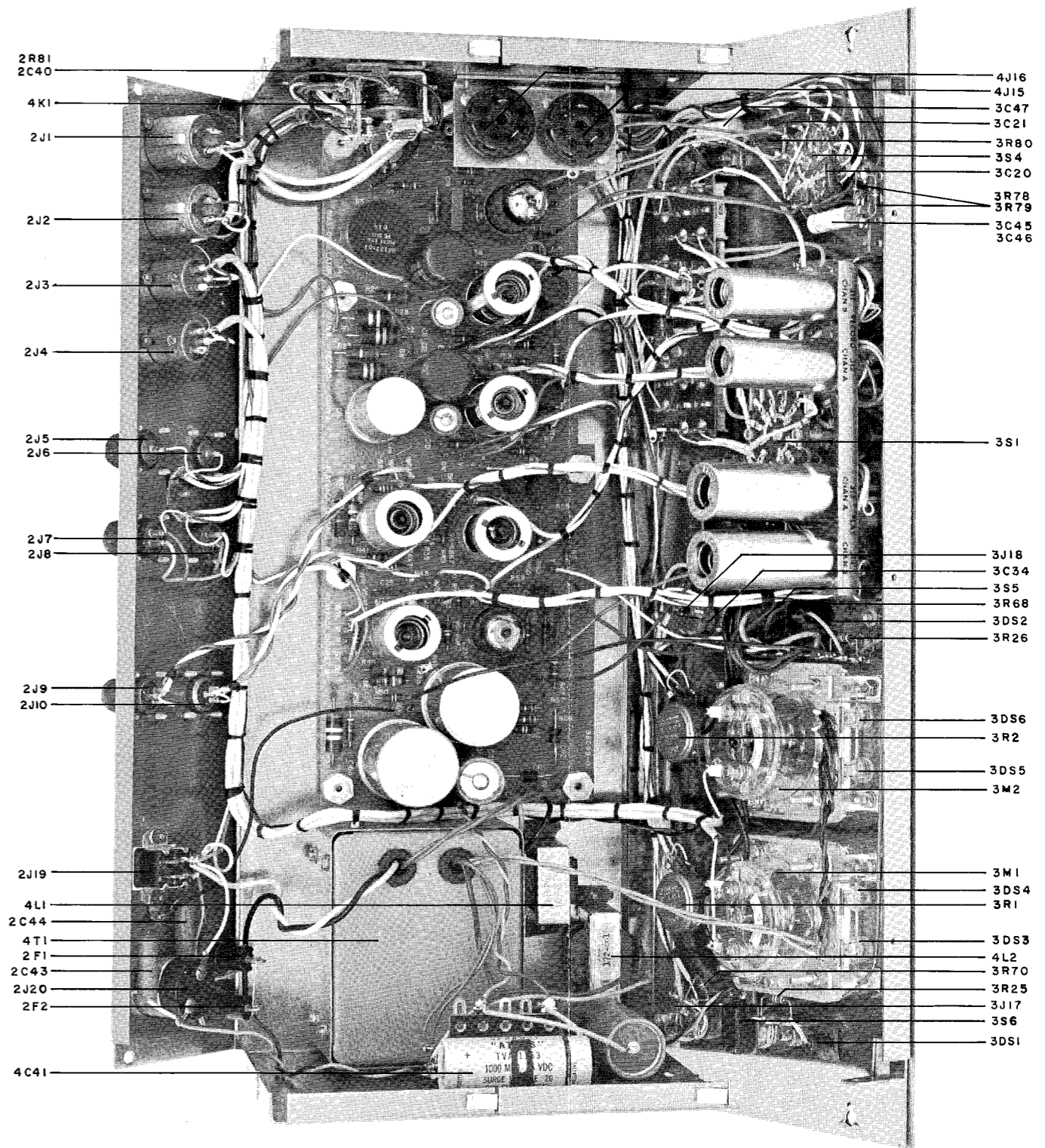


ETCHED BOARD JUMPERS (BOTTOM)



ETCHED BOARD CONNECTIONS (TOP)*

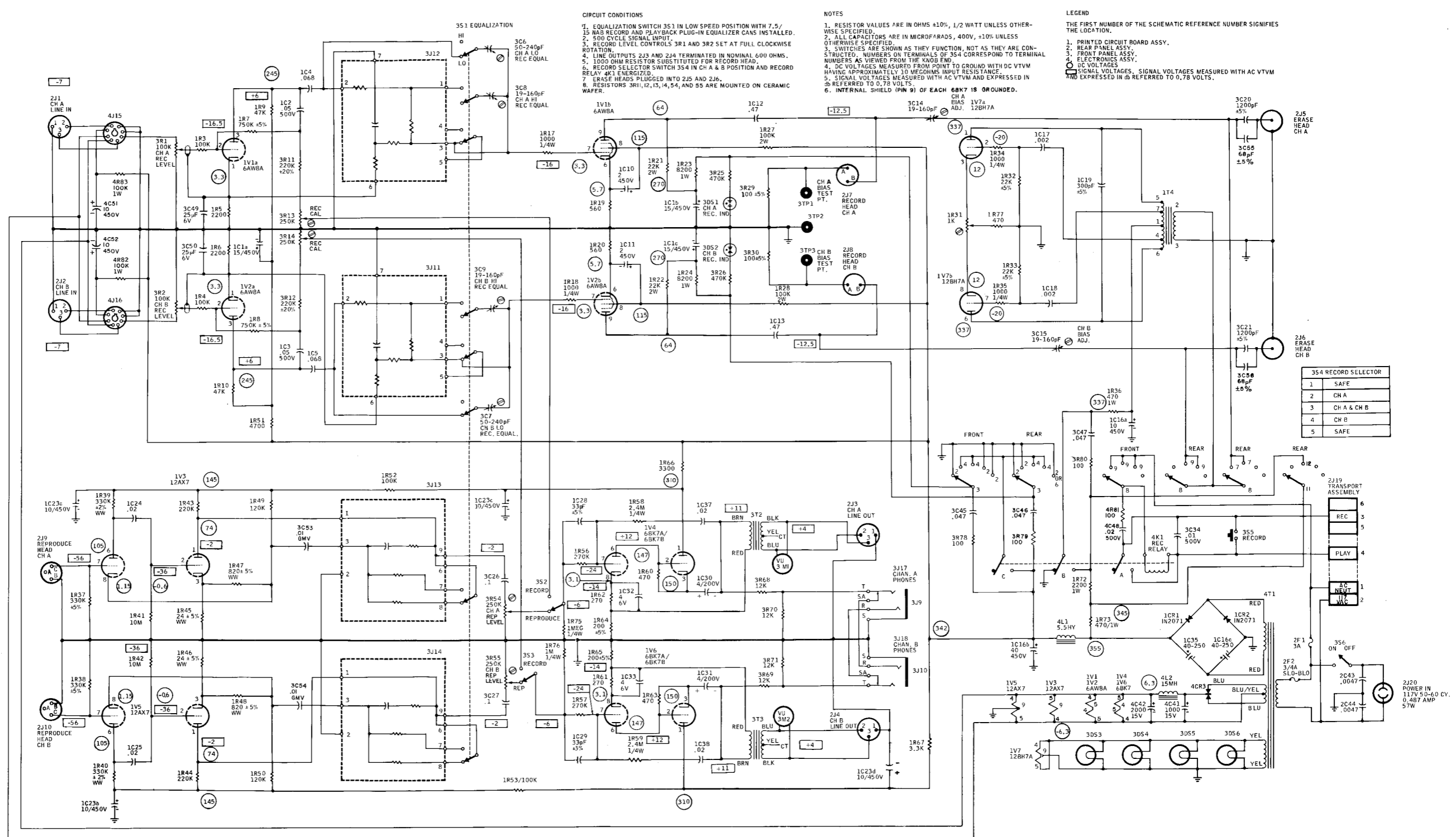
* CIRCUIT PATHS VIEWED THROUGH THE ETCHED BOARD.



CHASSIS PARTS LOCATION

PARTS LOCATION-ETCHED BOARD

**SCHEMATIC DIAGRAM -
354 ELECTRONIC ASSEMBLY**
Catalog No. 96601-01 thru -04
D-96603
(Sheet 1 of 2)



CIRCUIT CONDITIONS

- EQUALIZATION SWITCH 351 IN LOW SPEED POSITION WITH 7.5/15 NAB RECORD AND PLAYBACK PLUG-IN EQUALIZER CANS INSTALLED.
- 500 CYCLE SIGNAL INPUT.
- RECORD LEVEL CONTROLS 3R1 AND 3R2 SET AT FULL CLOCKWISE ROTATION.
- LINE OUTPUTS 2J3 AND 2J4 TERMINATED IN NOMINAL 600 OHMS.
- 1000 OHM RESISTOR SUBSTITUTED FOR RECORD HEAD.
- RECORD SELECTOR SWITCH 354 IN CH A & B POSITION AND RECORD RELAY 4K1 ENERGIZED.
- ERASE HEADS PLUGGED INTO 2J5 AND 2J6.
- RESISTORS 3R1, 12, 13, 14, 54, AND 55 ARE MOUNTED ON CERAMIC WAFER.

NOTES

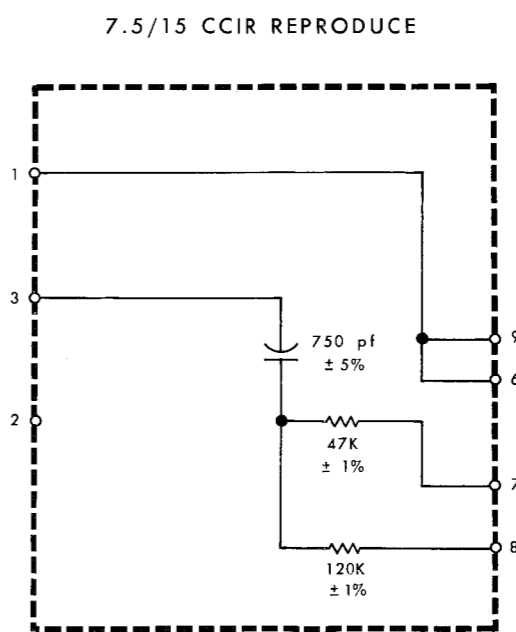
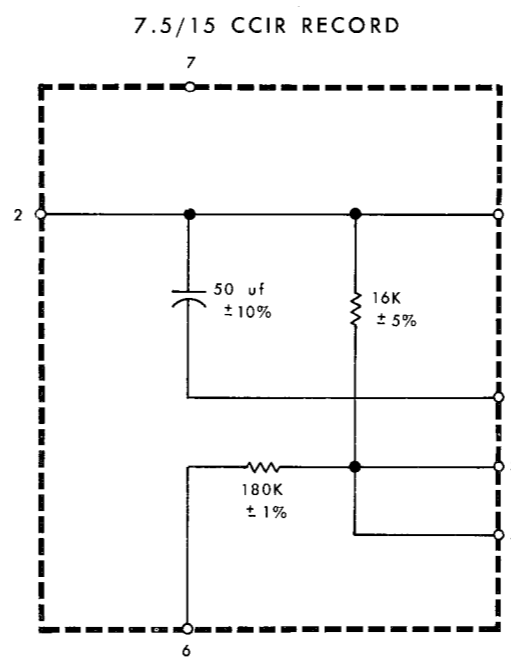
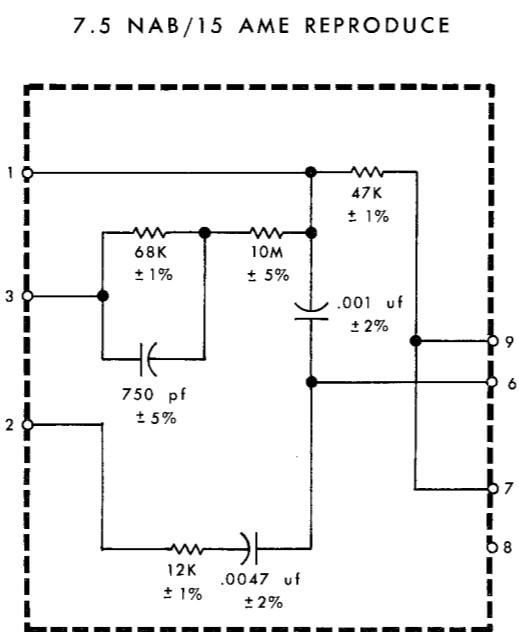
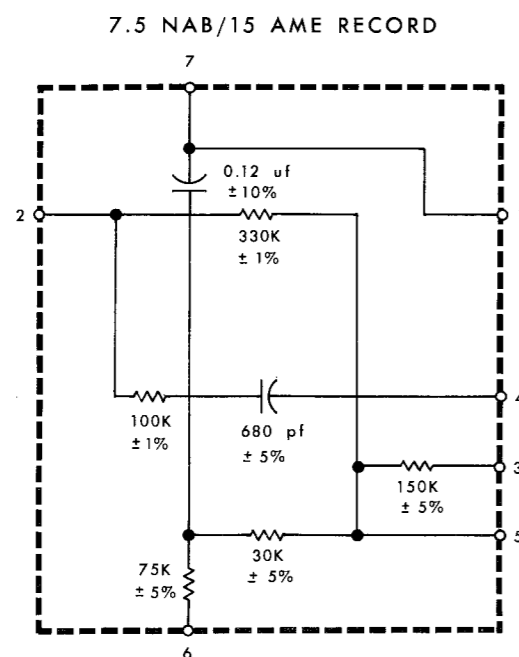
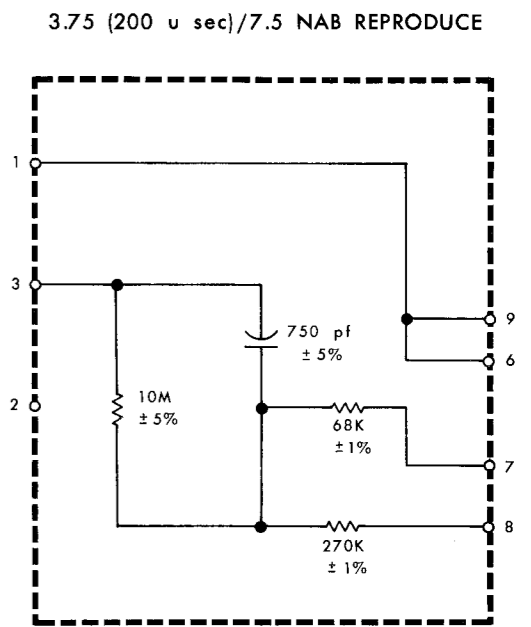
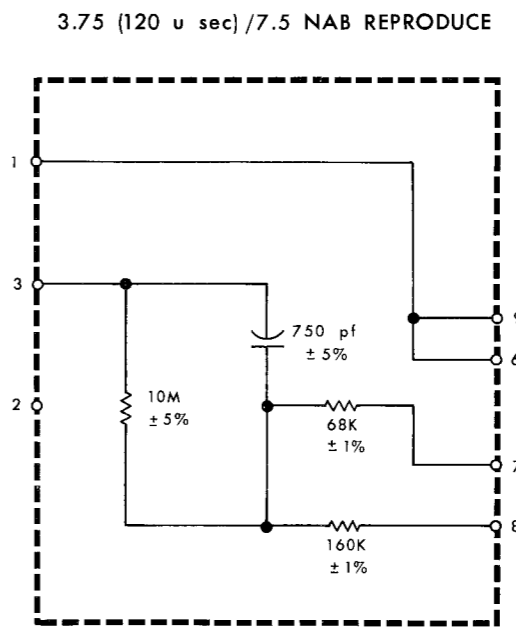
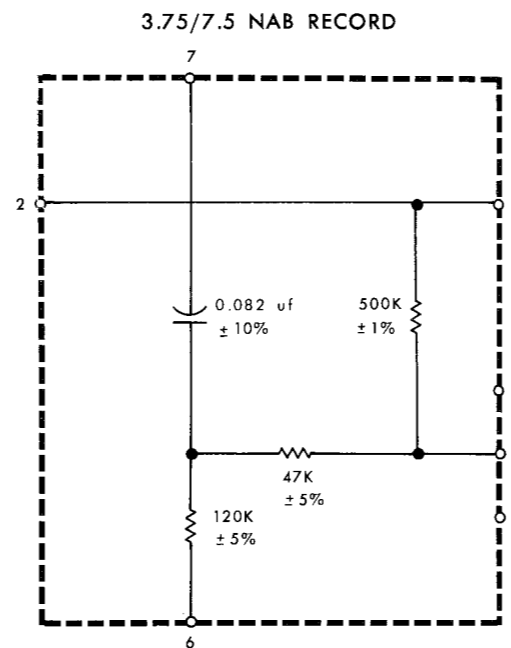
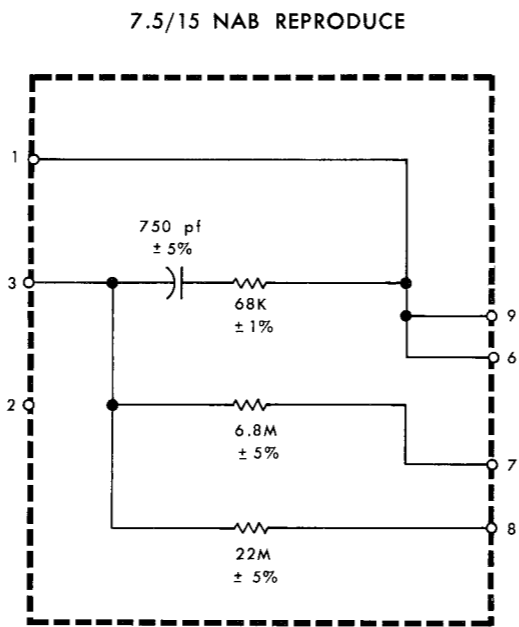
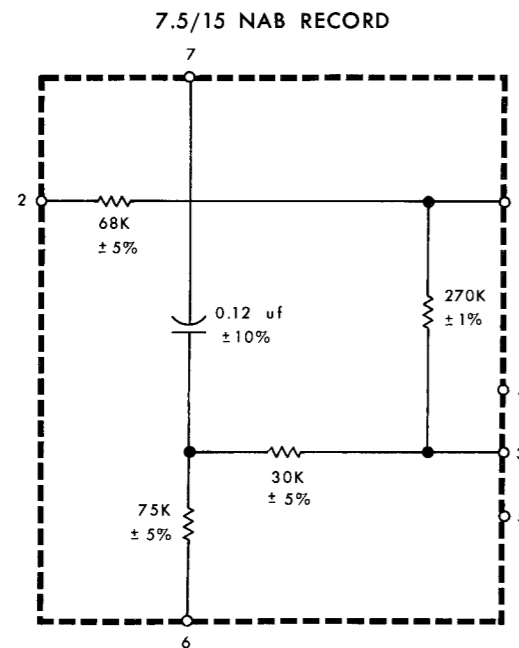
- RESISTOR VALUES ARE IN OHMS $\pm 10\%$, 1/2 WATT UNLESS OTHERWISE SPECIFIED.
- ALL CAPACITORS ARE IN MICROFARADS, 400V, $\pm 10\%$ UNLESS OTHERWISE SPECIFIED.
- SWITCHES ARE SHOWN AS THEY FUNCTION, NOT AS THEY ARE CONSTRUCTED. NUMBERS ON TERMINALS OF 3S4 CORRESPOND TO TERMINAL NUMBERS AS VIEWED FROM THE KNOB END.
- DC VOLTAGES MEASURED FROM POINT TO GROUND WITH DC VTVM HAVING APPROXIMATELY 10 MEGOHMS INPUT RESISTANCE.
- SIGNAL VOLTAGES MEASURED WITH AC VTVM AND EXPRESSED IN μ REFERRED TO 0.78 VOLTS.
- INTERNAL SHIELD (PIN 9) OF EACH 6BK7 IS GROUNDED.

LEGEND

- THE FIRST NUMBER OF THE SCHEMATIC REFERENCE NUMBER SIGNIFIES THE LOCATION.
- PRINTED CIRCUIT BOARD ASSY.
 - REAR PANEL ASSY.
 - FRONT PANEL ASSY.
 - ELECTRONICS ASSY.
 - DC VOLTAGES
 - SIGNAL VOLTAGES. SIGNAL VOLTAGES MEASURED WITH AC VTVM AND EXPRESSED IN μ REFERRED TO 0.78 VOLTS.

1	SAFE
2	CH A
3	CH A & CH B
4	CH B
5	SAFE

SCHEMATIC DIAGRAM
 354 ELECTRONIC ASSEMBLY
 Catalog No. 96601-01 thru -04
 D-96603
 (Sheet 2 of 2)



NOTE:
 The schematic diagrams shown here are of the plug-in equalizer assemblies for the 354 electronics. Typical plug-in equalizers are shown on the schematic diagram for the electronic assembly.