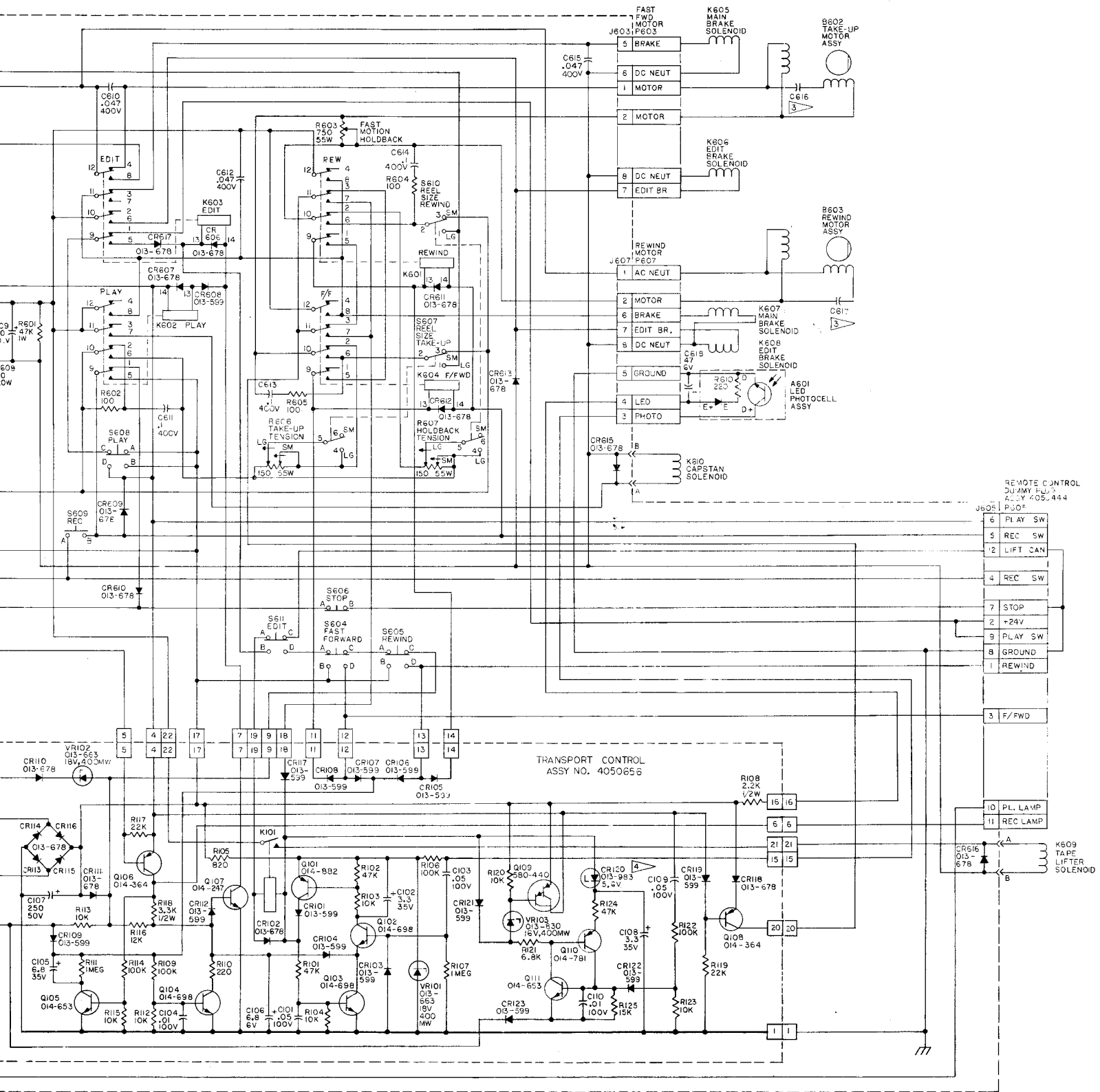
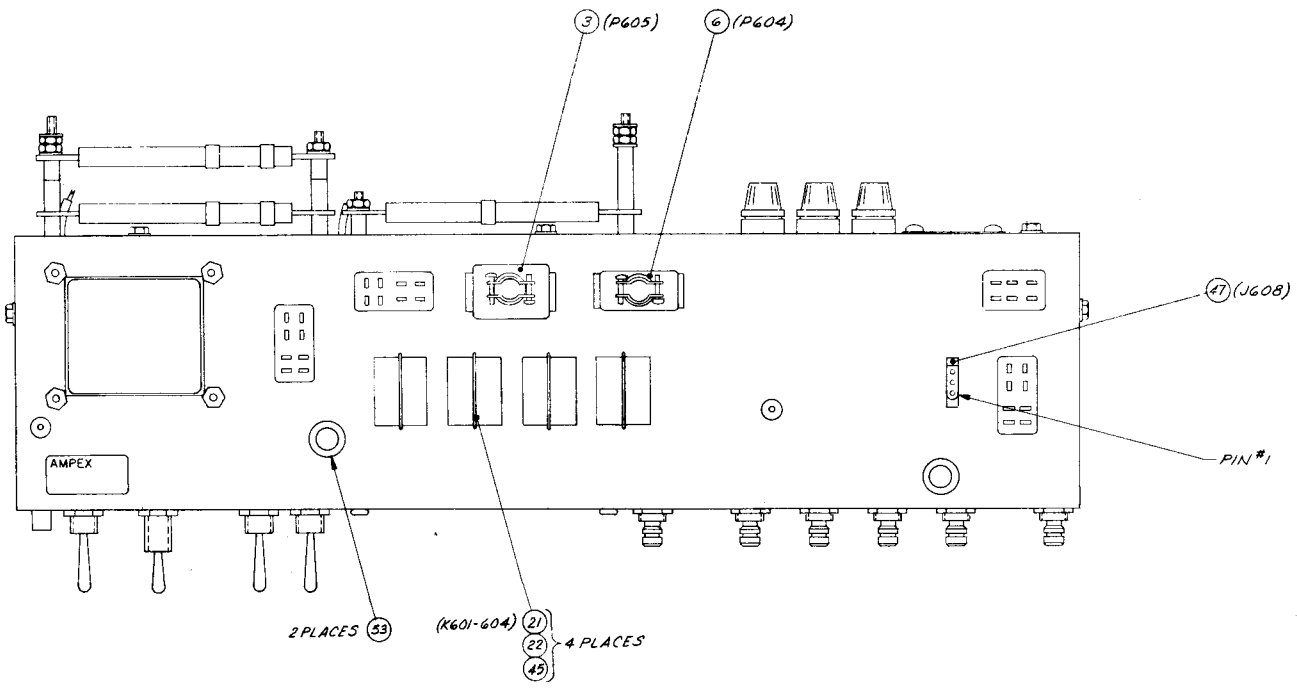


NOTES: UNLESS OTHERWISE SPECIFIED  
 1 ALL RESISTOR VALUES ARE IN OHMS, 1/4W.  
 2 ALL CAPACITOR VALUES ARE IN MICROFARADS.  
 3 10MFD 236VAC EXCEPT 5MFD 300VAC WITH 4500107-30 MOTOR.  
 4 FUNCTIONS AS A FORWARD BIASED DIODE

AMPX P/N	FIELD SERVICE REPLACEMENT LIST	REF. DE NOT US
014-781	MP565B	R608
014-247	2N2919	CR604
014-364	2N2905A	P601, 6
014-653	2N3904	P701-5
014-698	2N3565	
014-862	2N3636A	
013-678	1N4385	
013-663	1N967B	
013-599	1N914	
013-983	1N752	
013-830	1N5665	
580-440	MPS-A65	



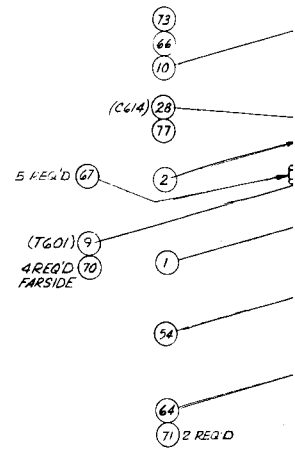
FIELD SERVICE REPLACEMENT LIST	REF. DES.	LAST REFERENCE	
AMPX P/N	NEAREST COML EQUIV	NOT USED	DES. USED
O14-781	MPS 6518	R608	CR17
O14-247	2N2219	CR614	R608
O14-364	2N2305A	P601, 6	C110
O14-653	2N3904	P701-5	J609
O14-698	2N3565		Q111
O14-682	2N3638A		S611
O13-678	IN4385		K101
O13-663	IN967B		DS601
O13-599	IN914		T601
O13-983	IN753		F603
O13-830	IN966B		R611
580-440	MPS-A 65		K610
			A601
			P705



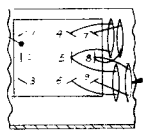
REF

36/L

1.31  
4 PLACES

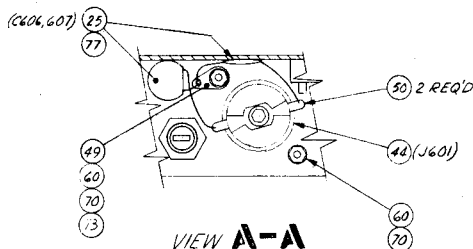


REF (11)

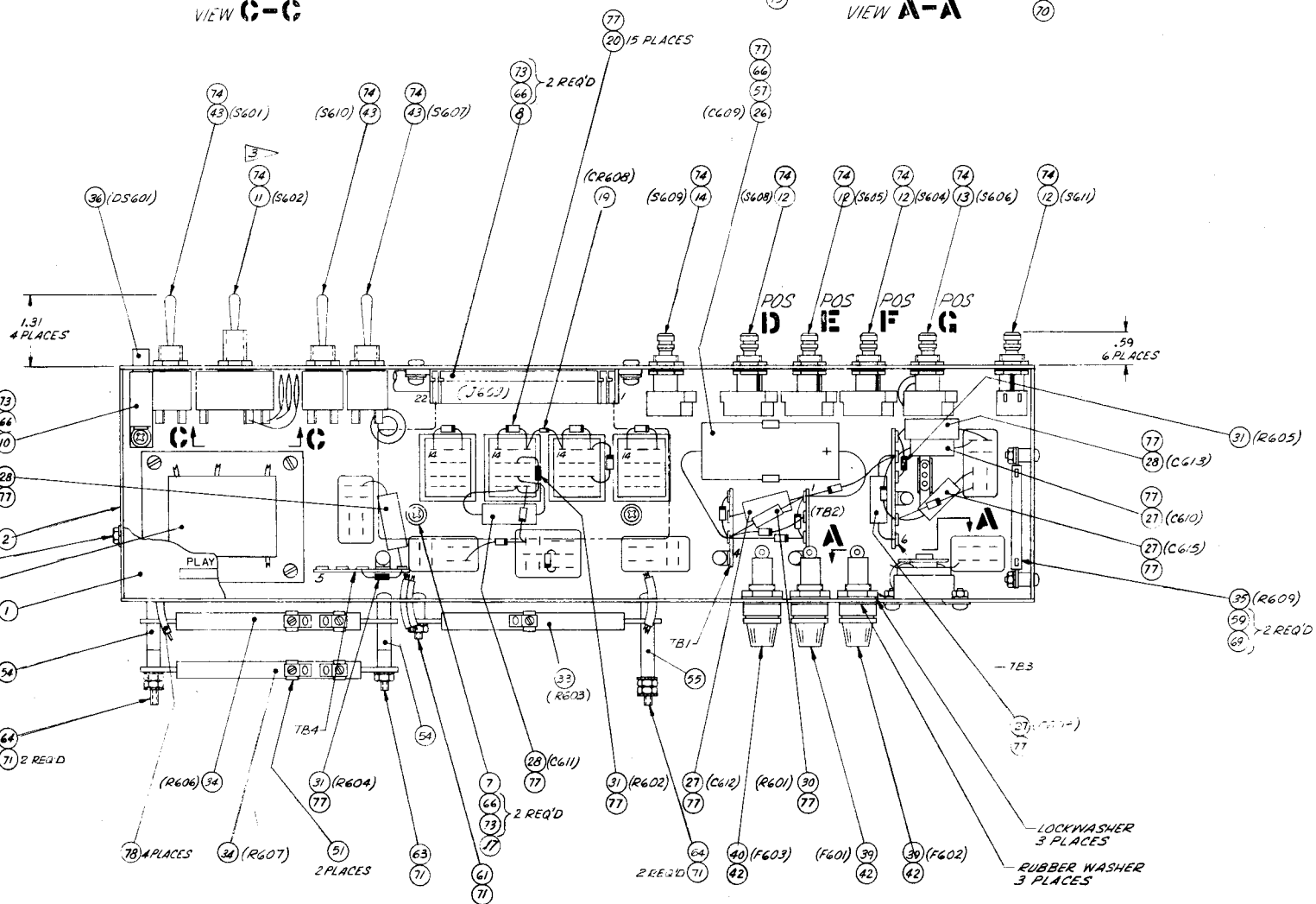


VIEW C-C

24 4 REQ'D (C602-605)  
77



VIEW A-A

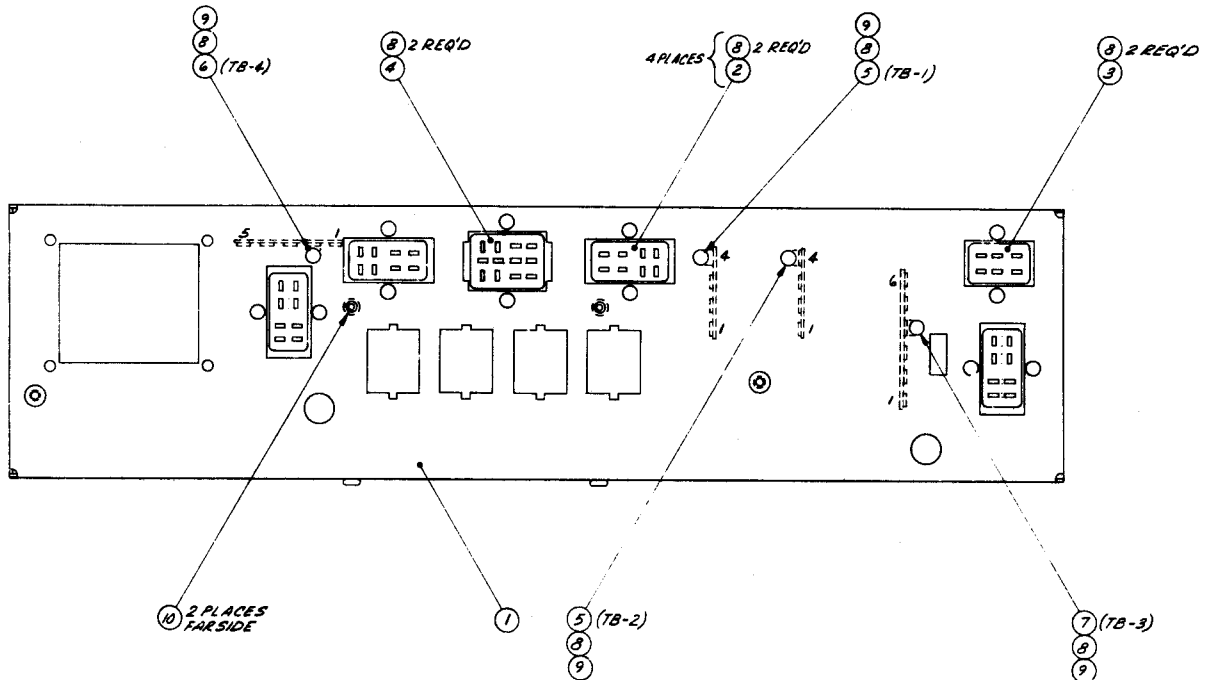


Assembly No. 4020338  
Transport Control Box Assembly

NEXT HIGHER ASSEMBLY NO. 4020338

ITEM NO.	AMPEX PART NO.	REFERENCE NUMBER	DESCRIPTION	JEDEC NO. OR MFR. PART NO.
1	4041092-01		CHASSIS, CONTROL BOX	
2	146-003		CONNECTOR, RECT RECP, 8 SOC	
3	146-004		CONNECTOR, RECT RECP, 6 SOC	
4	146-009		CONNECTOR, RECT RECP, 12 SOC	
5	180-079		STRIP, TERMINAL, SOLDER LUG	
6	180-277		STRIP, TERMINAL, SOLDER LUG	
7	180-994		STRIP, TERMINAL, SOLDER LUG	
8	460-008		RIVET, TUBULAR, OVAL HD, 0.12 DIA X 0.16 LG	
9	502-014		WASHER, LOCK, EXT TOOTH, NO. 6	
10	280-020		SPACER, THD, SWAGE, NO. 6-32 X 1.00 LG	

VERSION: 4041149-01



ASSEMBLY NO. 4050656C

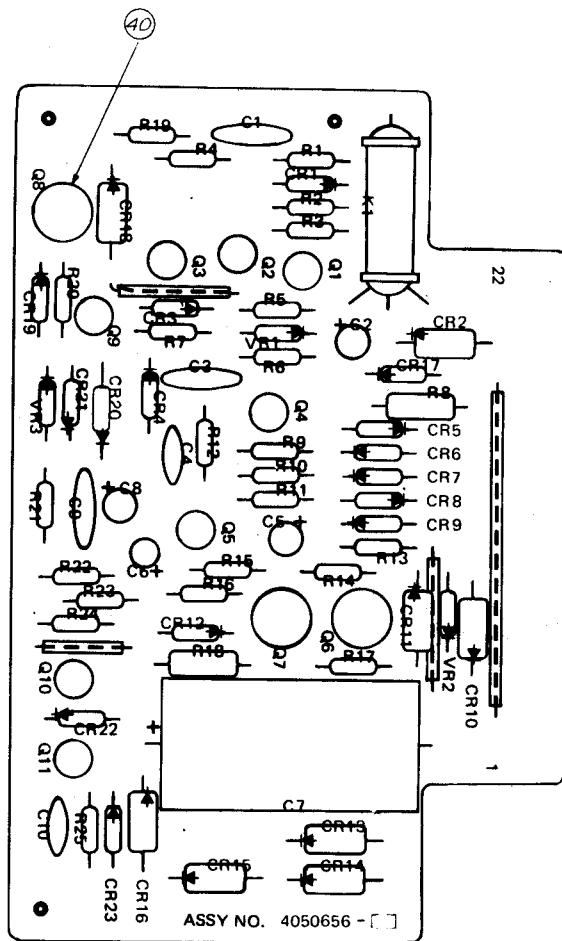
TITLE TRANSPORT CONTROL PWA

SHEET 1 OF 1

NEXT HIGHER ASSEMBLY NO. 4020338

ITEM NO.	AMPEX PART NO.	REFERENCE NUMBER	DESCRIPTION	JEDEC NO. OR MFR. PART NO.
2	4840261		SCHEMATIC, TRANSPORT	
5	013-599	CR1, 3-9, 12, 17, 19, 21-23	DIODE	1N914
6	013-663	VR1, 2	DIODE	1N967B
7	013-678	CR2, 10, 11, 13-16, 18	DIODE	1N4385
8	014-247	Q7	TRANSISTOR	2N2219
9	014-364	Q6, 8	TRANSISTOR	2N2905A
10	014-653	Q5, 11	TRANSISTOR	2N3904A
11	014-698	Q2, 3, 4	TRANSISTOR	2N3565
12	014-781	Q10	TRANSISTOR	MPS6518
13	014-882	Q1	TRANSISTOR	MPS3638A-5
14	020-778	K1	RELAY, SPST, REED	
15	013-983	CR20	DIODE	1N752A
16	013-830	VR3	DIODE	1N966B
17	030-057	C4, 10	CAPACITOR, CER, 0.01 UF, 100V, 20%	
18	030-144	C1, 3, 9	CAPACITOR, CER, 0.05 UF, 100V, 20%	
20	031-126	C7	CAPACITOR, ALUM, 250 UF, 50V	
22	037-895	C2, 8	CAPACITOR, TANT, 3.3 UF, 35V	
23	037-931	C5	CAPACITOR, TANT, 6.8 UF, 35V	
24	037-968	C6	CAPACITOR, TANT, 6.8 UF, 6V	
27	041-052	R8	RESISTOR, COMP, 2.2K, 1/2W, 10%	
28	041-054	R18	RESISTOR, COMP, 3.3K, 1/2W, 10%	
29	041-626	R6, 9, 14, 22	RESISTOR, COMP, 100K, 1/4W, 10%	
30	041-630	R17, 19	RESISTOR, COMP, 22K, 1/4W, 10%	
31	041-632	R16	RESISTOR, COMP, 12K, 1/4W, 10%	
32	041-633	R3, 4, 12, 13, 15, 20, 23	RESISTOR, COMP, 10K, 1/4W, 10%	
33	041-635	R21	RESISTOR, COMP, 6.8K, 1/4W, 10%	
34	041-968	R7, 11	RESISTOR, COMP, 1M, 1/4W, 10%	
35	041-640	R5	RESISTOR, COMP, 820 OHM, 1/4W, 10%	
36	049-372	R1, 2, 24	RESISTOR, COMP, 47K, 1/4W, 10%	
37	049-517	R10	RESISTOR, COMP, 220 OHM, 1/4W, 10%	
38	041-631	R25	RESISTOR, COMP, 15K, 1/4W, 10%	
40	280-998		PAD, MOUNTING	
41	580-440	Q9	TRANSISTOR	MPSA65-5

VERSION: 4050656-02



Assembly No. 4050656, Transport Control PWA