

Fig. 7-1. Tape Transport Assembly, Front View

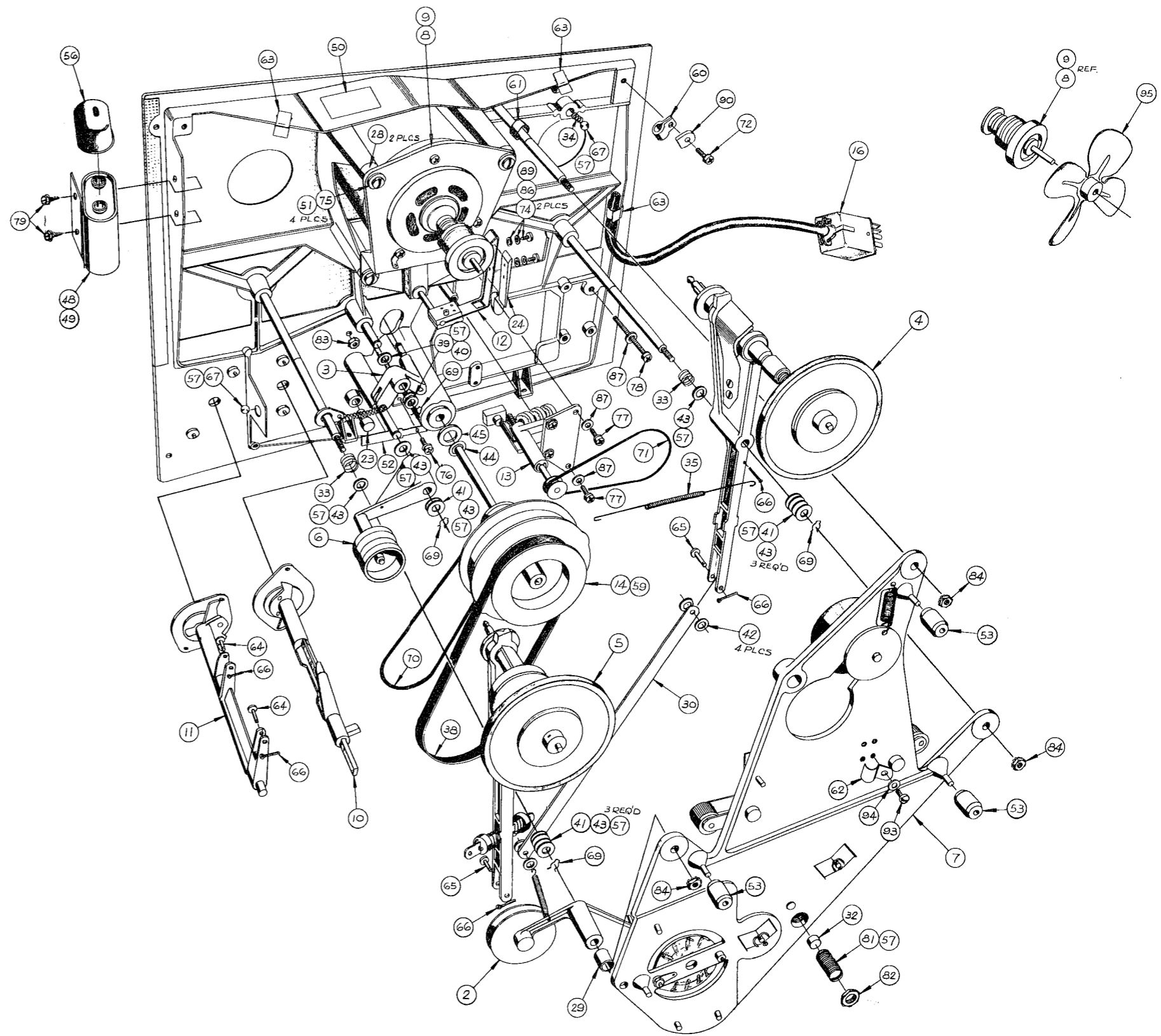


Fig. 7-2. Tape Transport Assembly, Back View

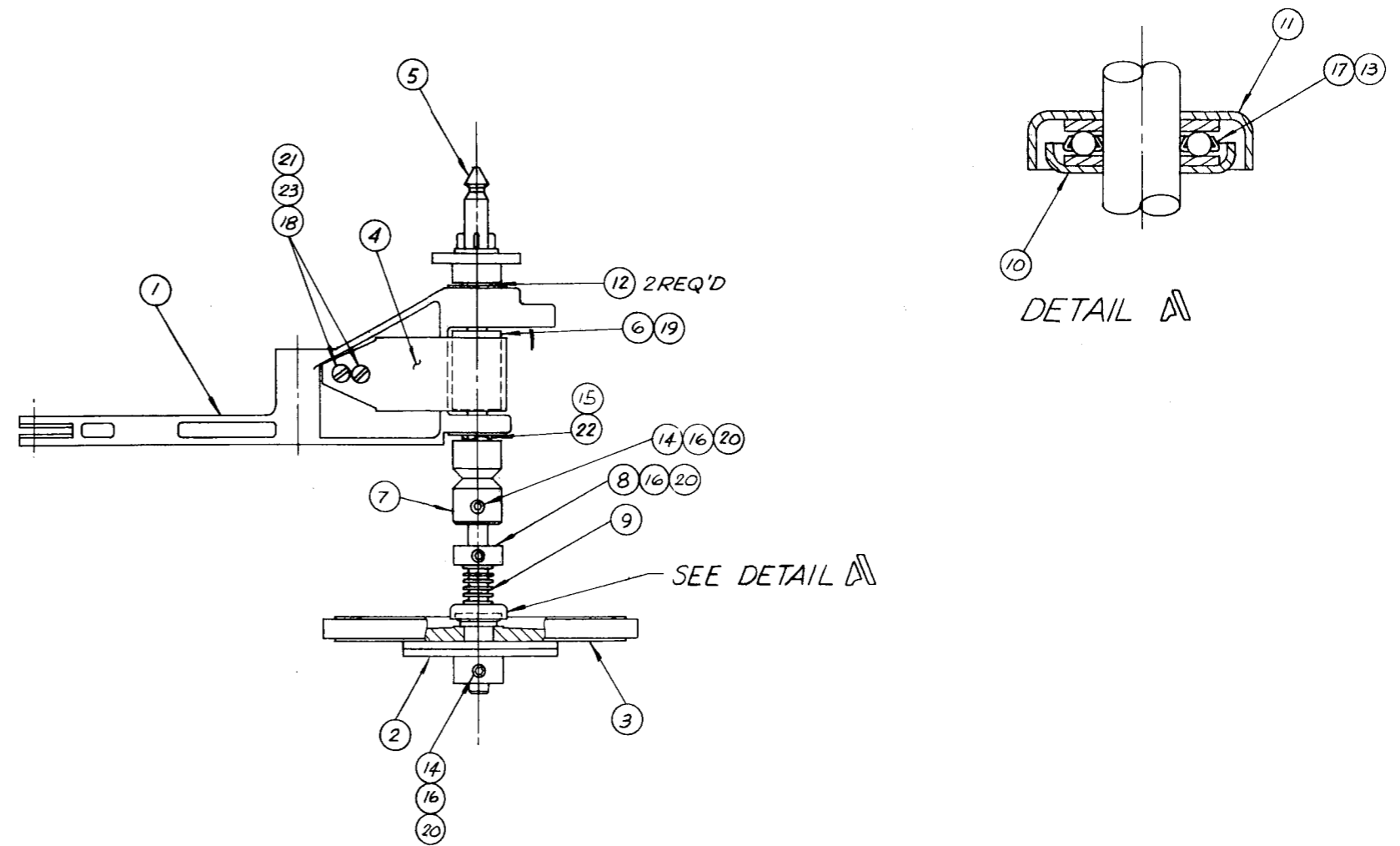


Fig. 7-5. Rewind Arm Assembly

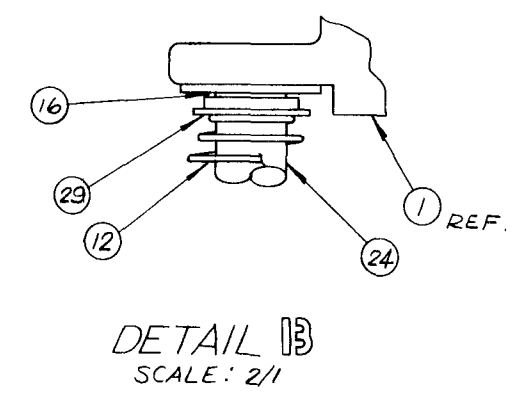
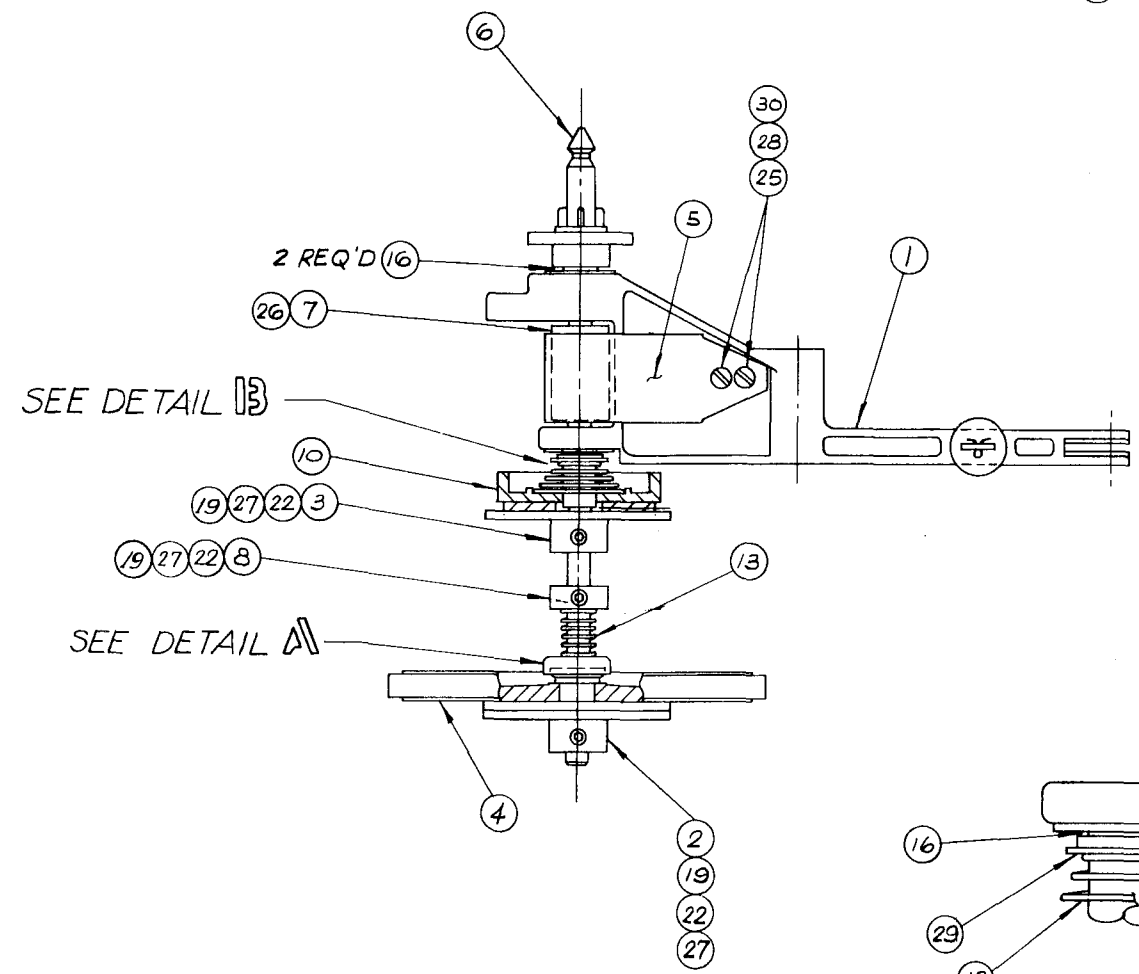
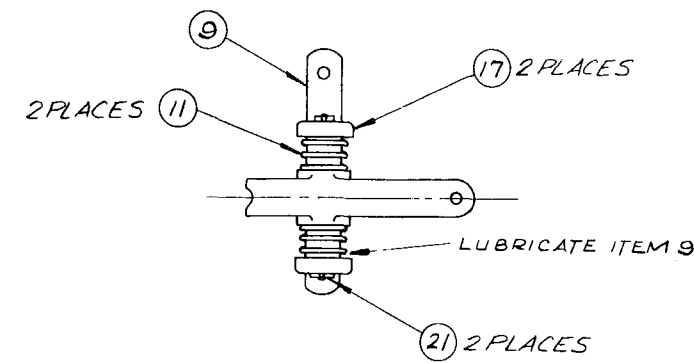
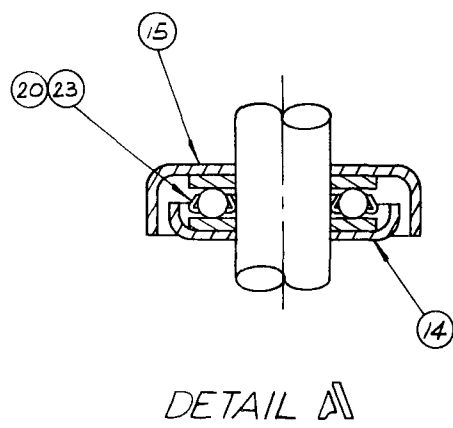


Fig. 7-6. Takeup Arm Assembly

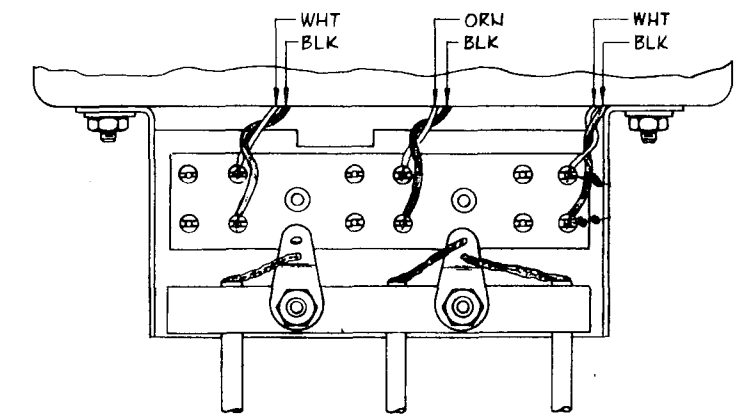
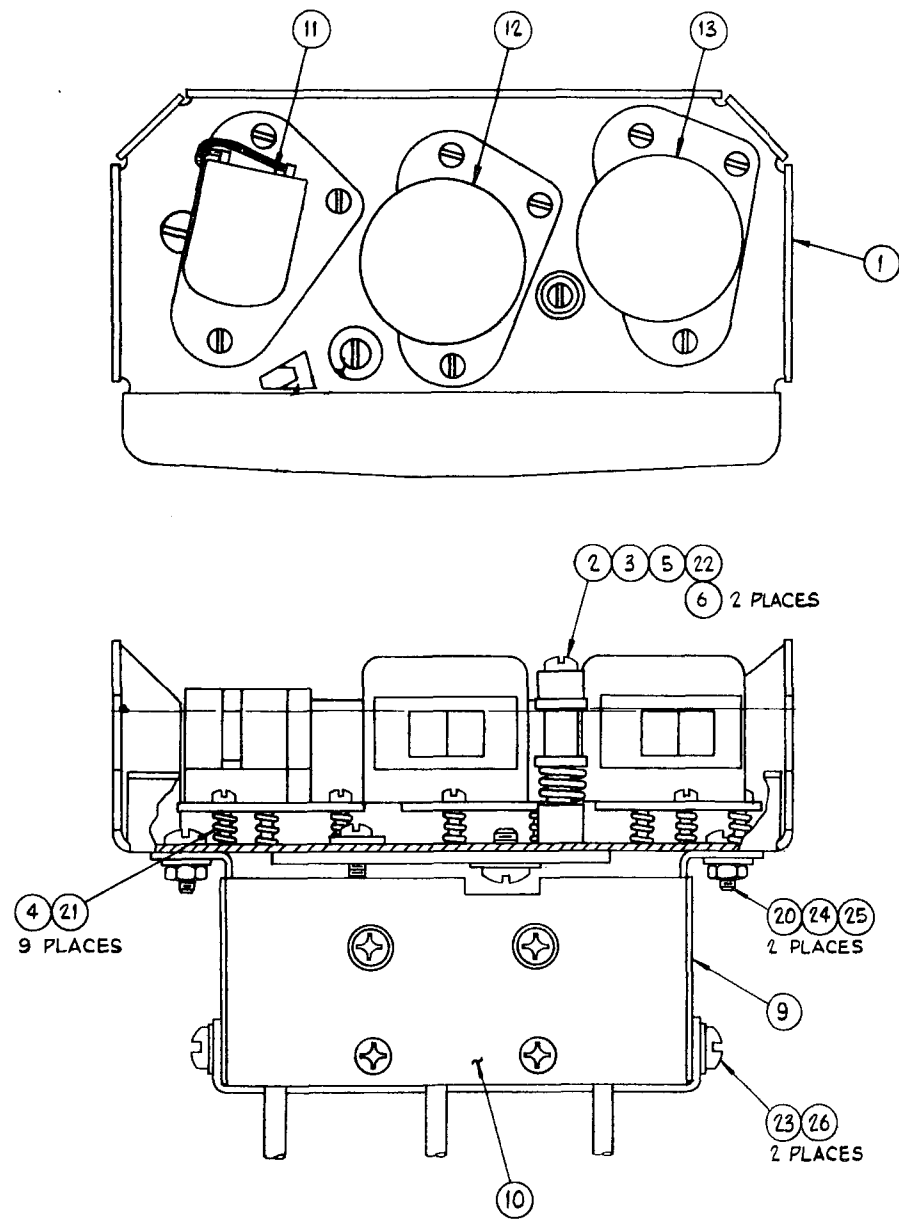


Fig. 7-11. Head Assembly, Full Track

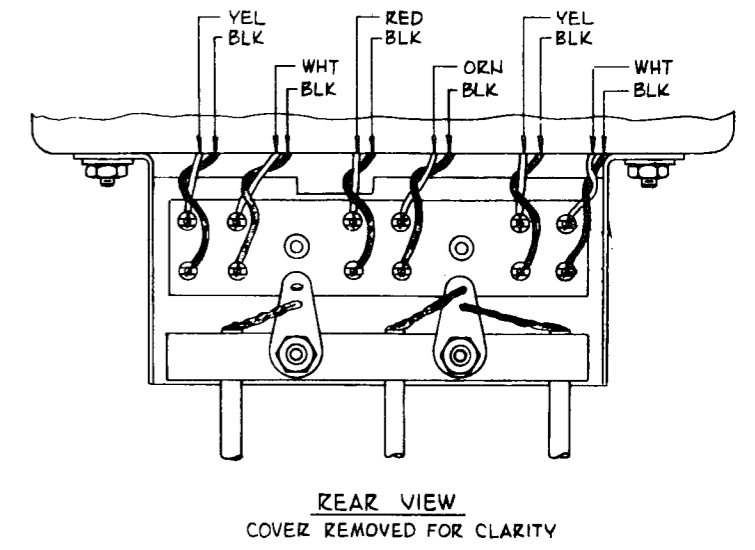
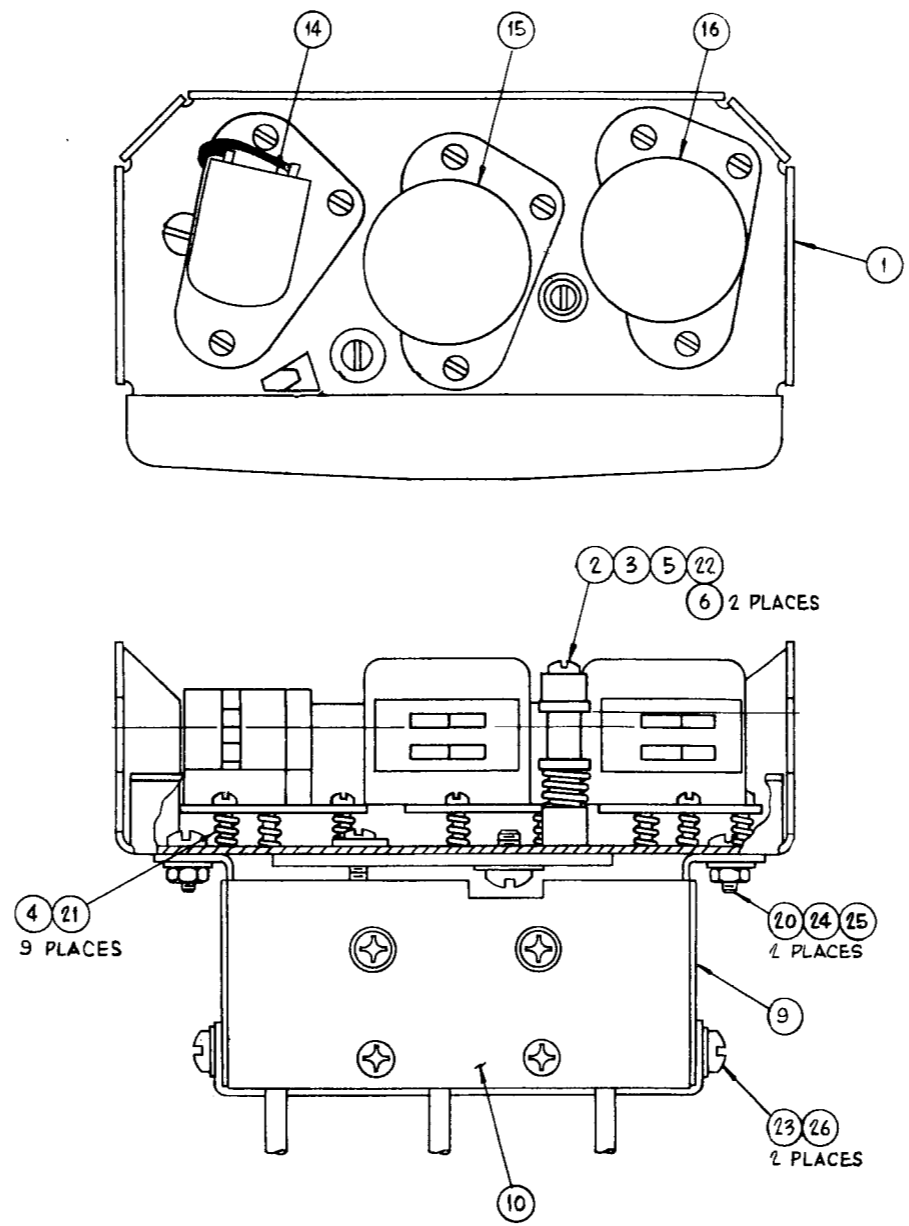


Fig. 7-12. Head Assembly, Half Track

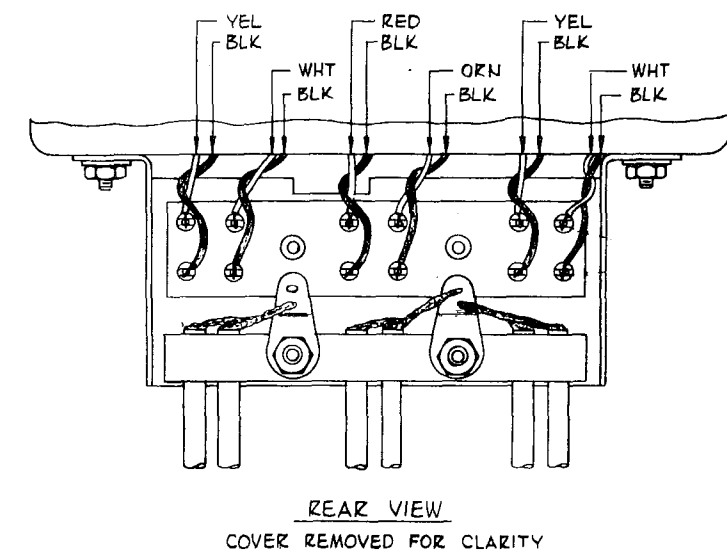
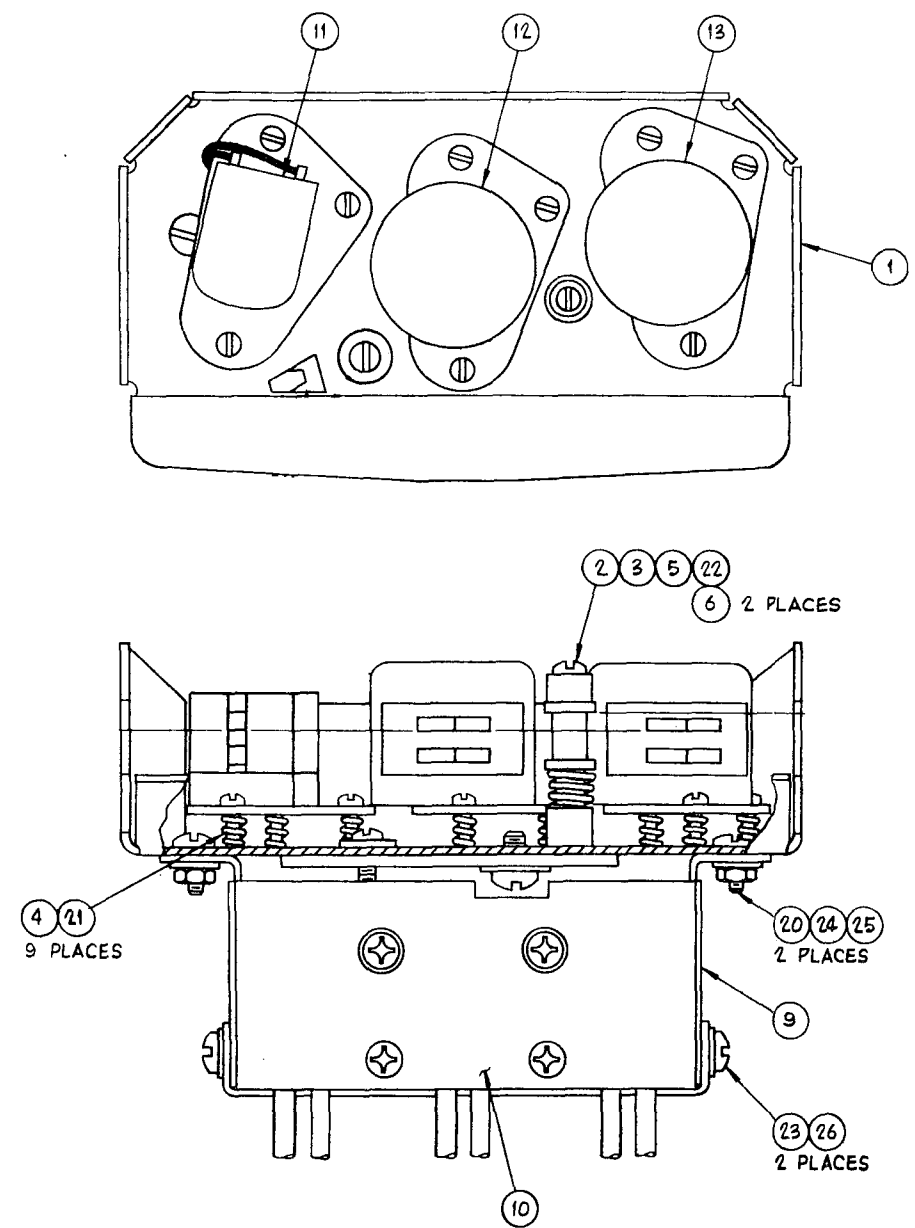


Fig. 7-13. Head Assembly, Two Track

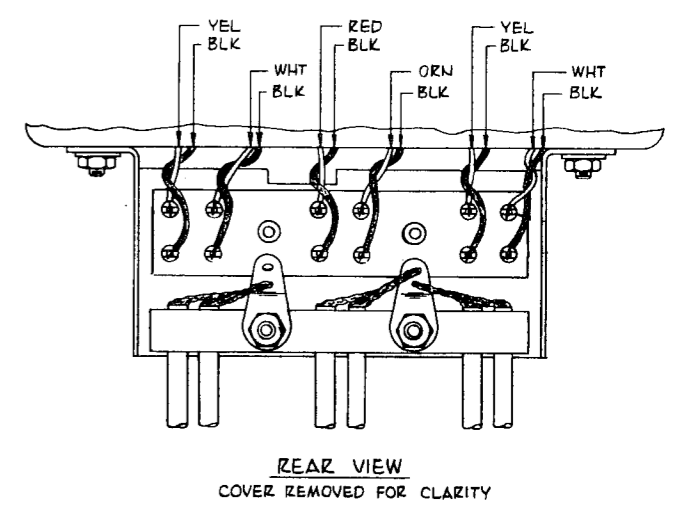
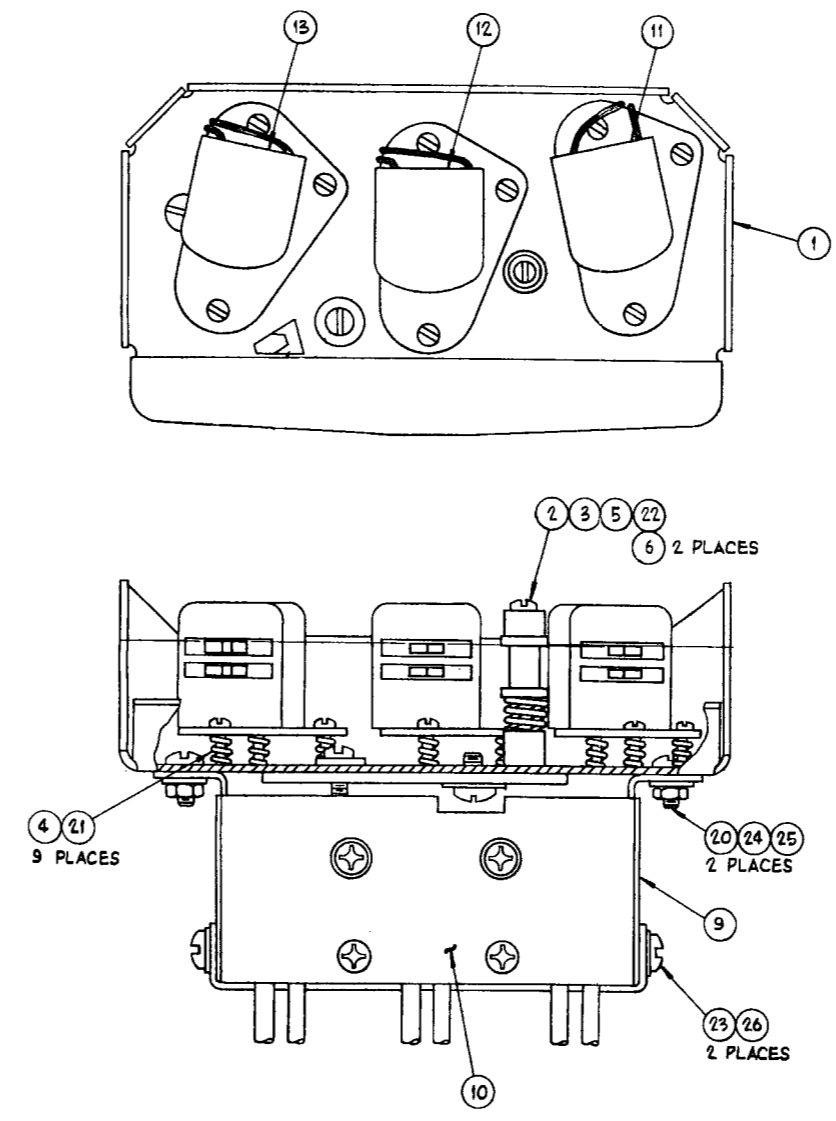


Fig. 7-14. Head Assembly, Quarter Track

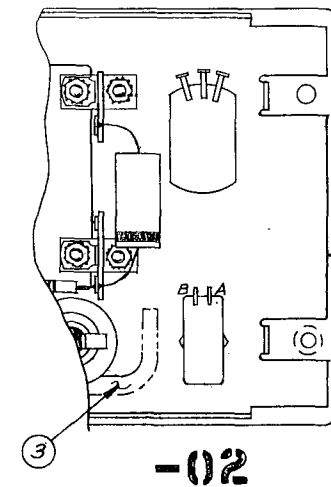
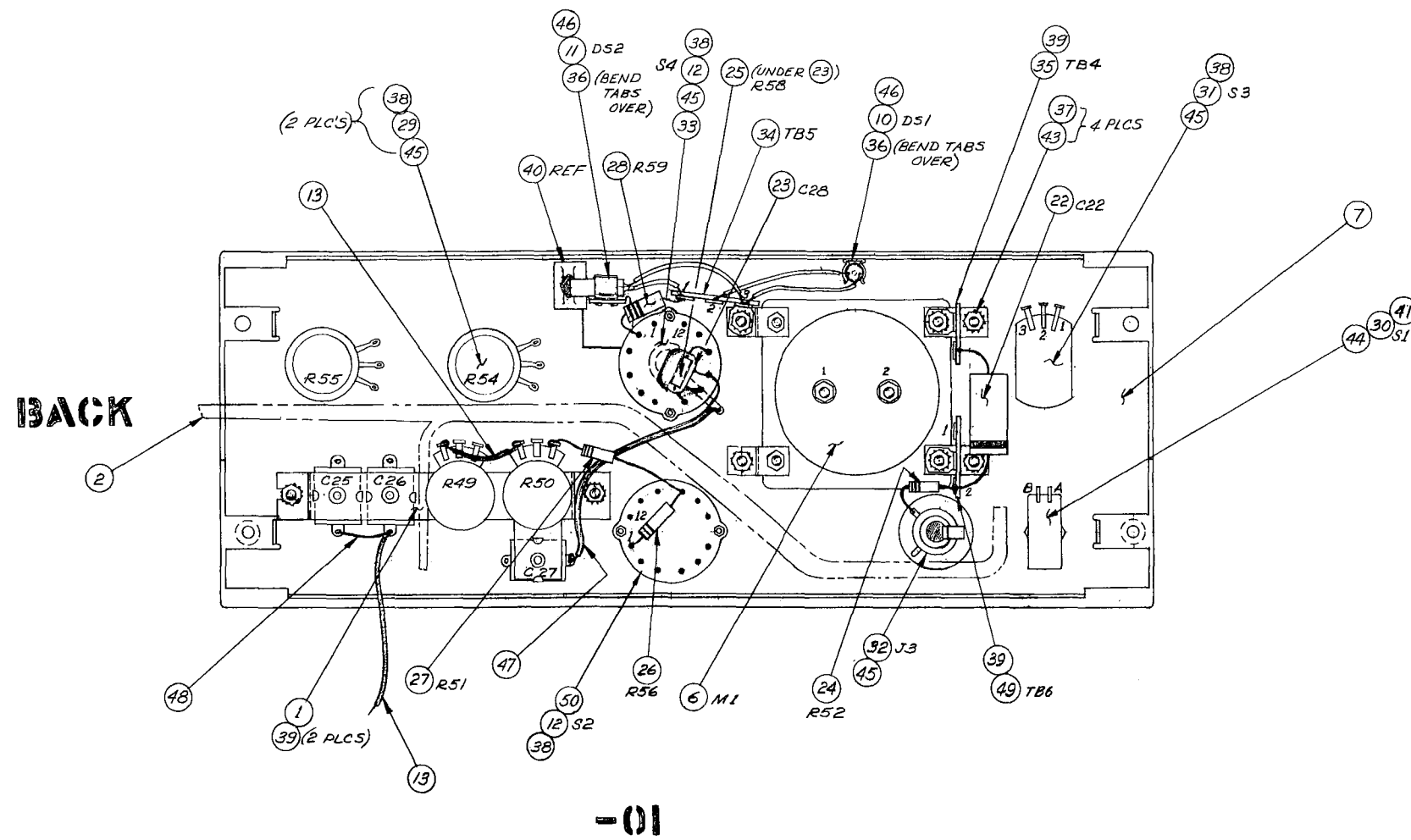
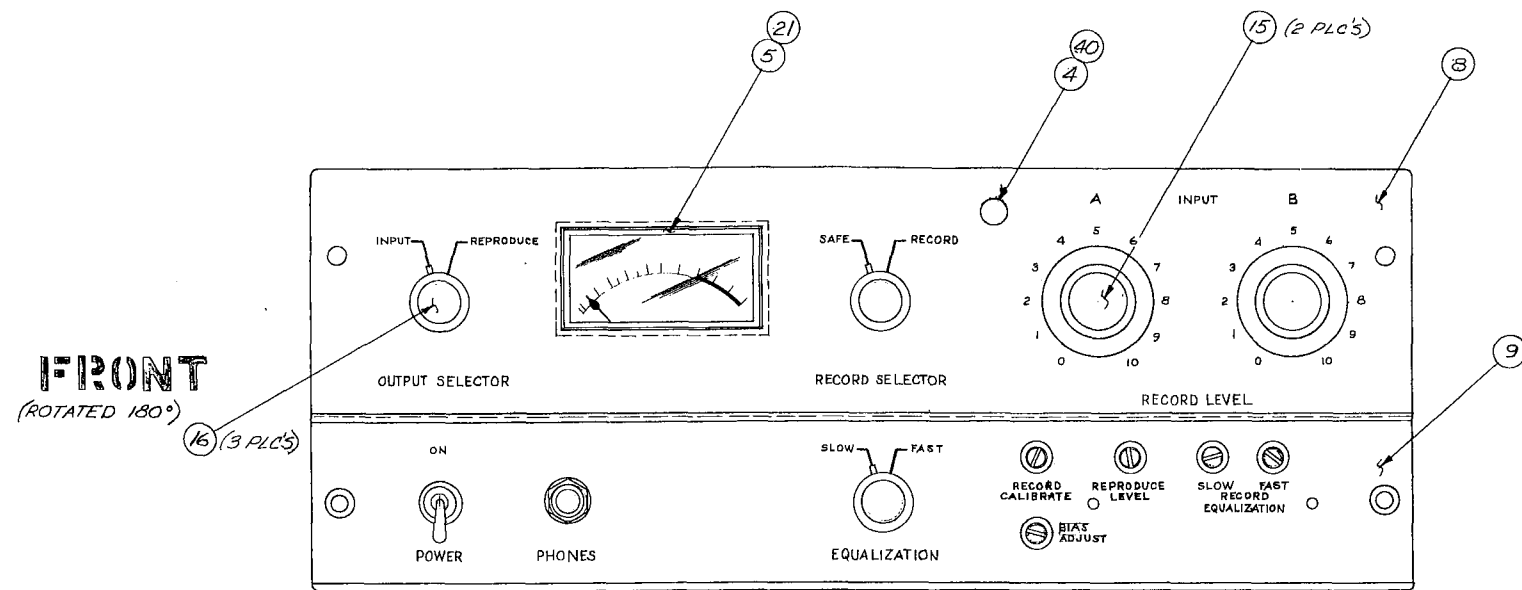


Fig. 7-15. Electronics, Front Panel Assembly

TABLE I

ASSY NO.	DESCRIPTION
4050251-01	MASTER NAB
4050251-02	SLAVE NAB
4050251-03	MASTER CCIR
4050251-04	SLAVE CCIR

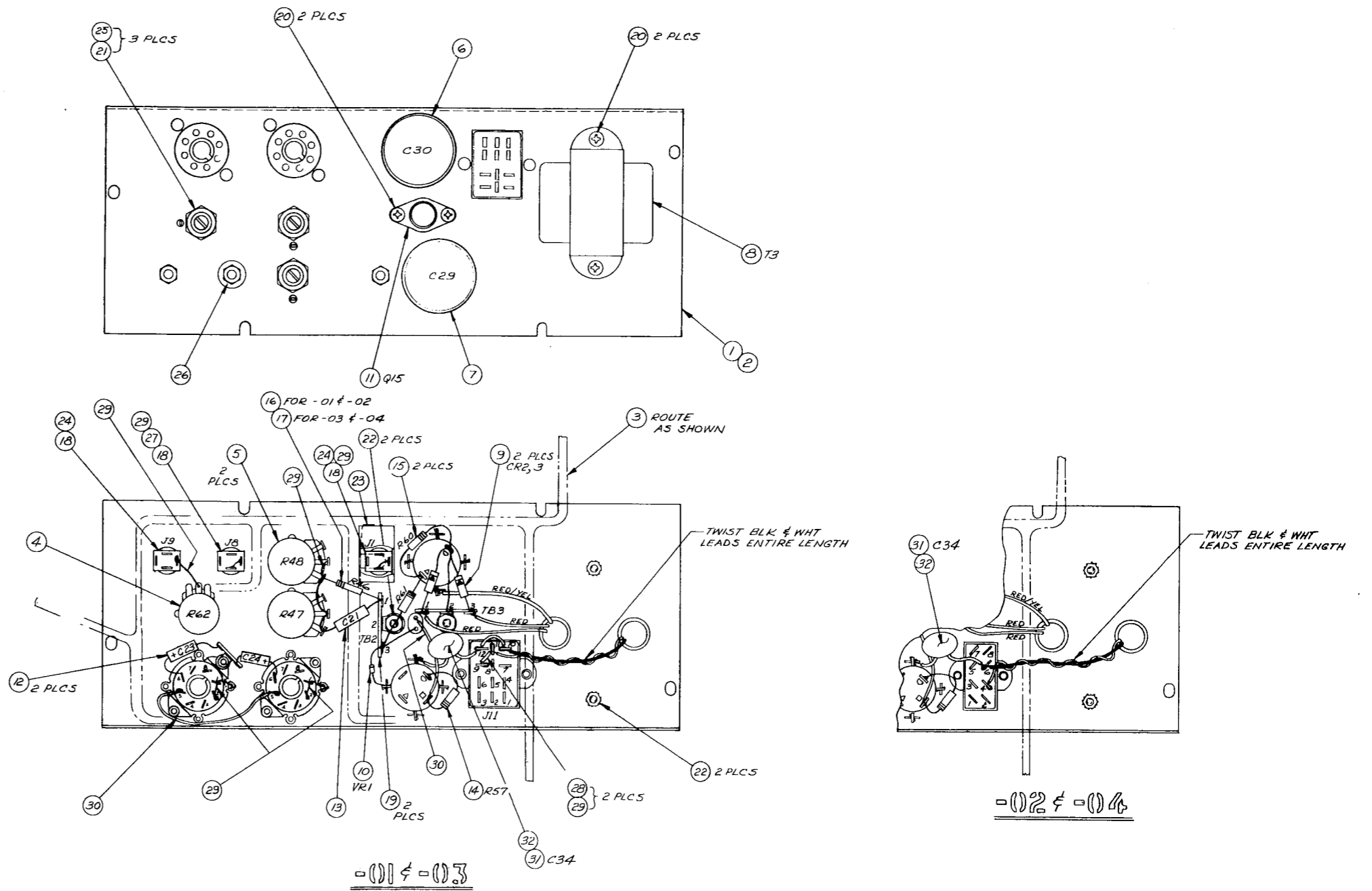
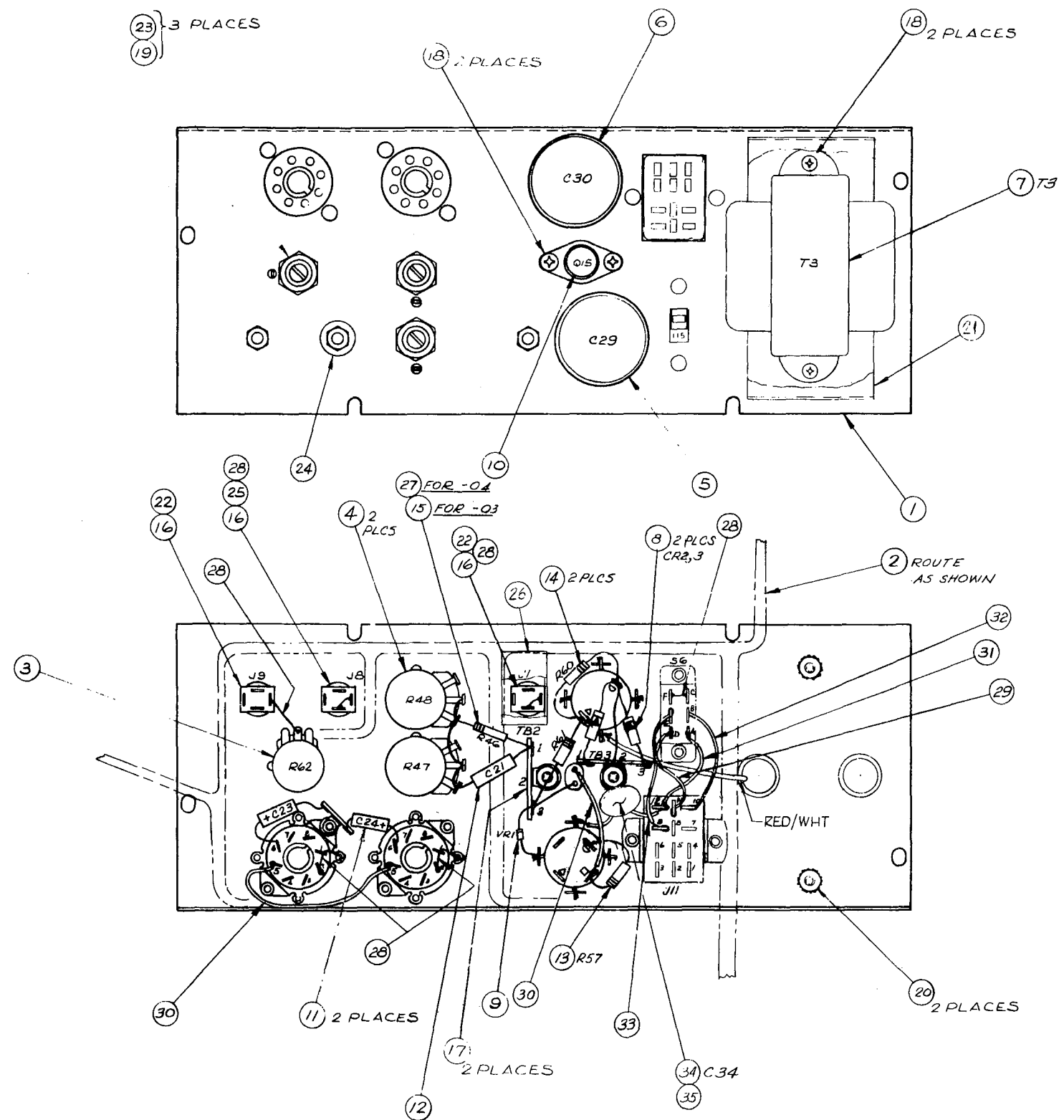


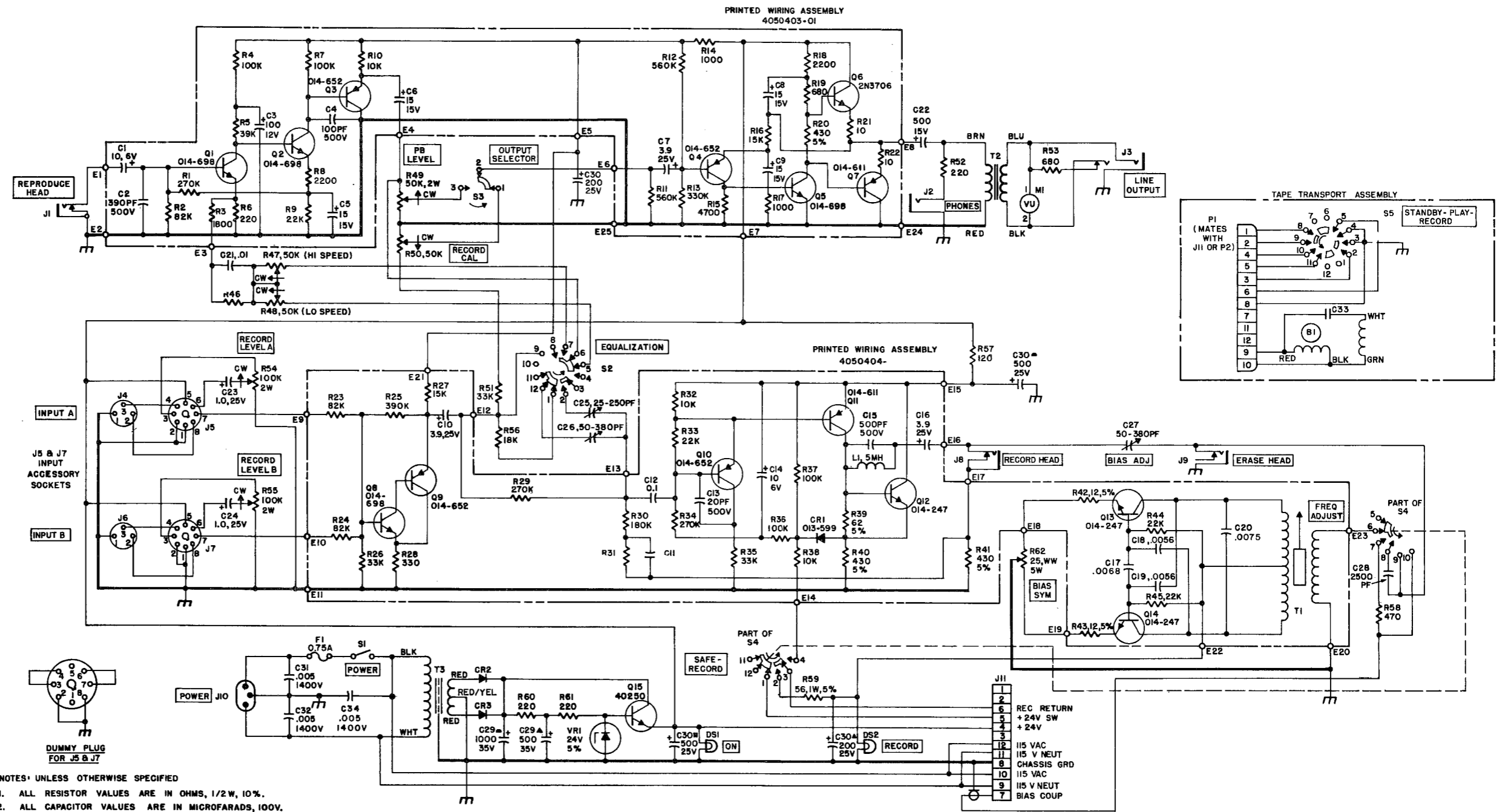
Fig. 7-16. Electronics, Back Panel Assembly (Domestic)



T3 CONNECTIONS	
COLOR	TERMINATION
RED	TB3-1
RED	TB3-3
RED / WHT	CHASSIS GRD (AS SHOWN)
WHT	S6-A
GRN	S6-B
GRN / YEL	S6-D
BLK	S6-E

TABLE I	
ASSY NO.	DESCRIPTION
4050405-03	N A B
4050405-04	CC 12

Fig. 7-17. Electronics, Back Panel Assembly (International)



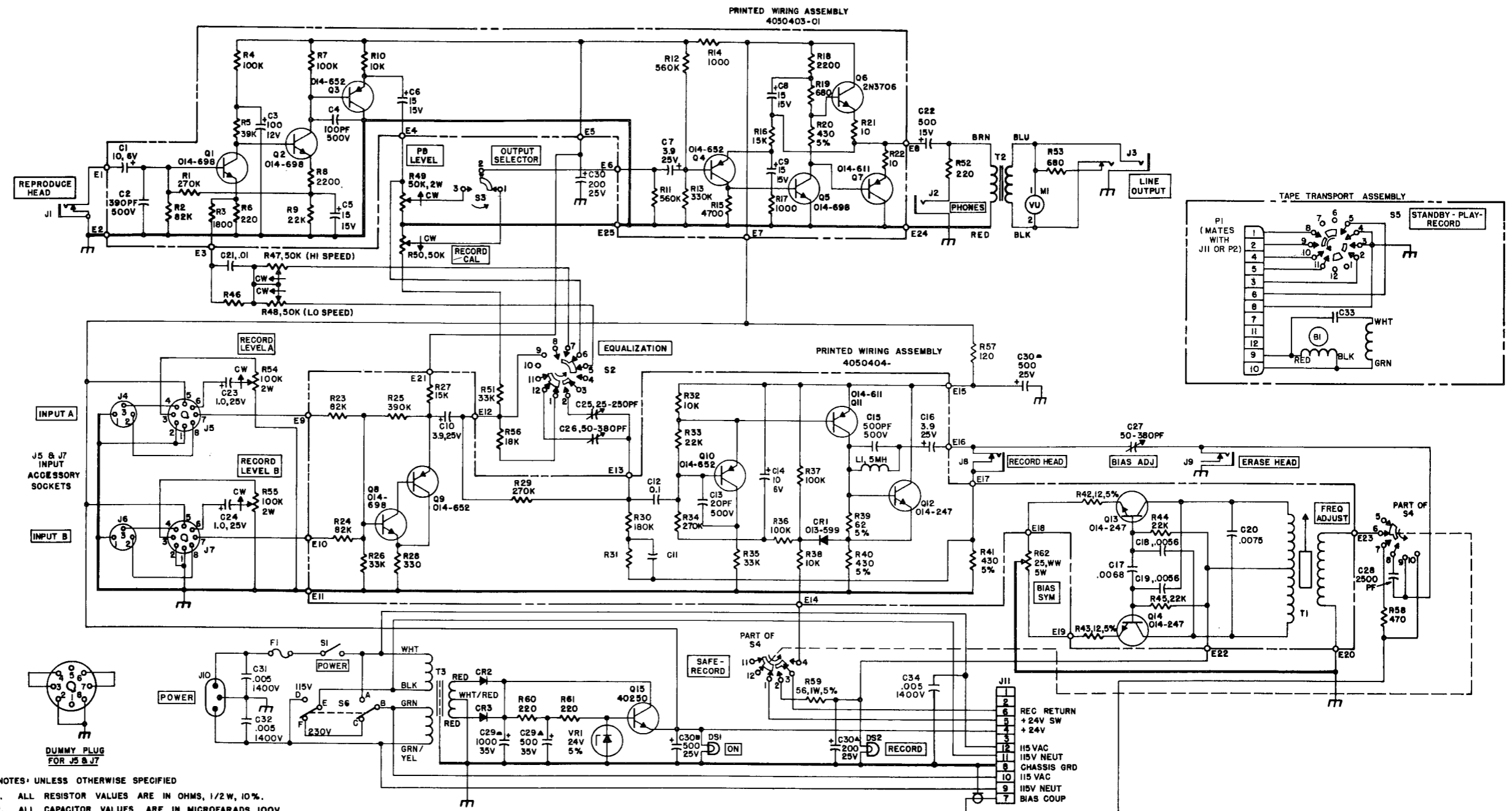
- NOTES: UNLESS OTHERWISE SPECIFIED
1. ALL RESISTOR VALUES ARE IN OHMS, 1/2W, 10%.
 2. ALL CAPACITOR VALUES ARE IN MICROFARADS, 100V.
 3. ALL DIODES ARE TYPE O13-67B.
 4. ALL SWITCHES ARE IN CCW OR OFF POSITION.

FOR NAB EQUALIZATION		
REF DES	DESCRIPTION	ASSEMBLY
R31	180K	4050404-01
R46	360K, 5%	4050251-01
C11	.018	4050404-01

FOR CQIR EQUALIZATION		
REF DES	DESCRIPTION	ASSEMBLY
R31	0	4050404-02
R46	2.2meg	4050251-03
C11	OPEN	4050404-02

LAST REF DES USED	REF DES NOT USED
R62	P1
C34	B1
Q15	
CR3	
L1	
T3	
S5	
VRI	
J11	
M1	
E25	
D52	
F1	

Fig. 7-18. Schematic Diagram, Master Electronics (Domestic)



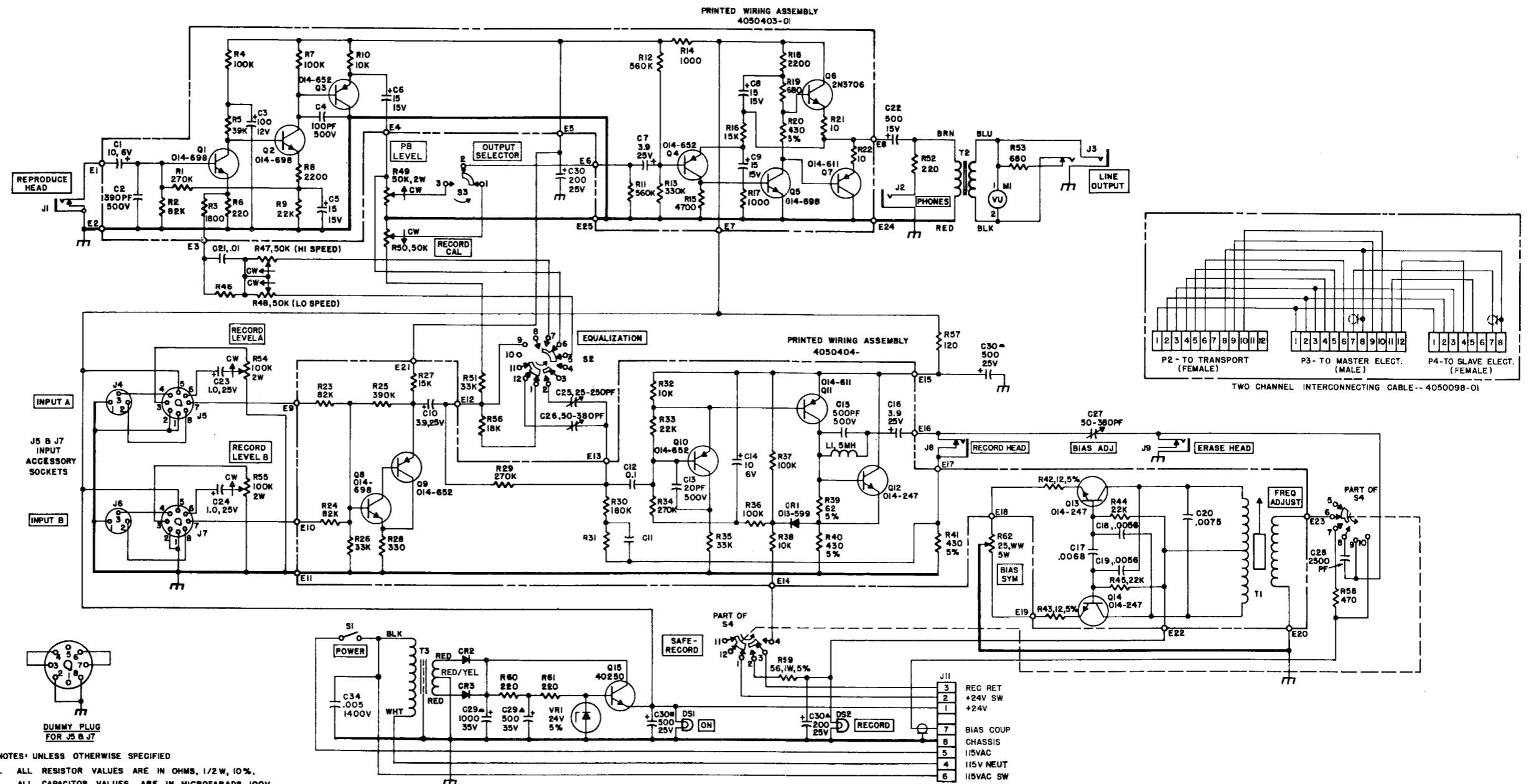
- NOTES: UNLESS OTHERWISE SPECIFIED
1. ALL RESISTOR VALUES ARE IN OHMS, 1/2W, 10%.
 2. ALL CAPACITOR VALUES ARE IN MICROFARADS, 100V.
 3. ALL DIODES ARE TYPE O13-678.
 4. ALL SWITCHES ARE IN CCW OR OFF POSITION.

FOR NAB EQUALIZATION		
REF DES	DESCRIPTION	ASSEMBLY
R31	180K	4050404-01
R46	360K, 5%	4050405-01
C11	.018	4050404-01

FOR CQIR EQUALIZATION		
REF DES	DESCRIPTION	ASSEMBLY
R31	0	4050404-02
R46	2.2 meg	4050405-02
C11	OPEN	4050404-02

LAST REF DES USED	REF DES NOT USED
R62	P1
C34	B1
Q15	
CR3	
L1	
T3	
S6	
VR1	
J11	
M1	
E25	
DS2	
F1	

Fig. 7-19. Schematic Diagram, Master Electronics (International)

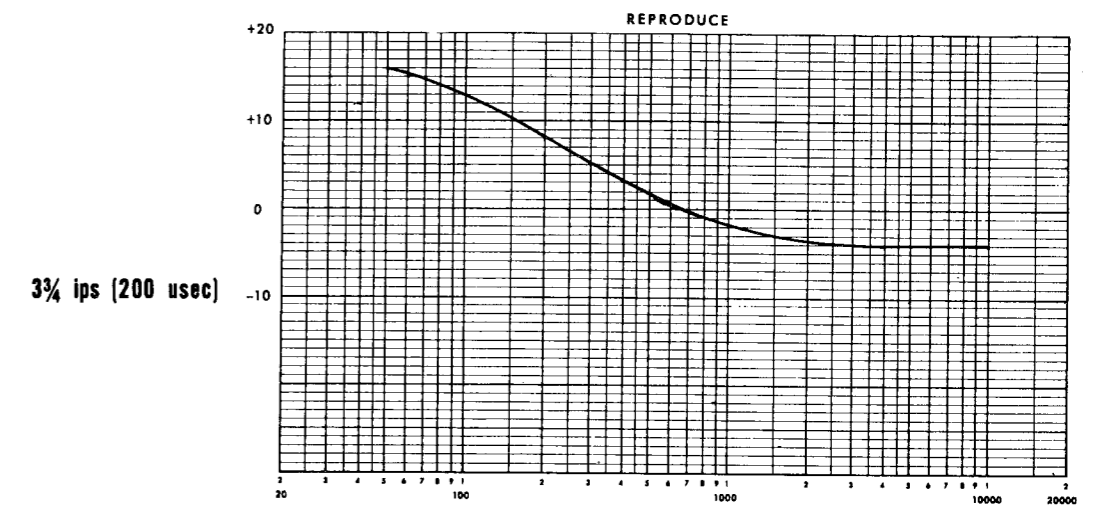
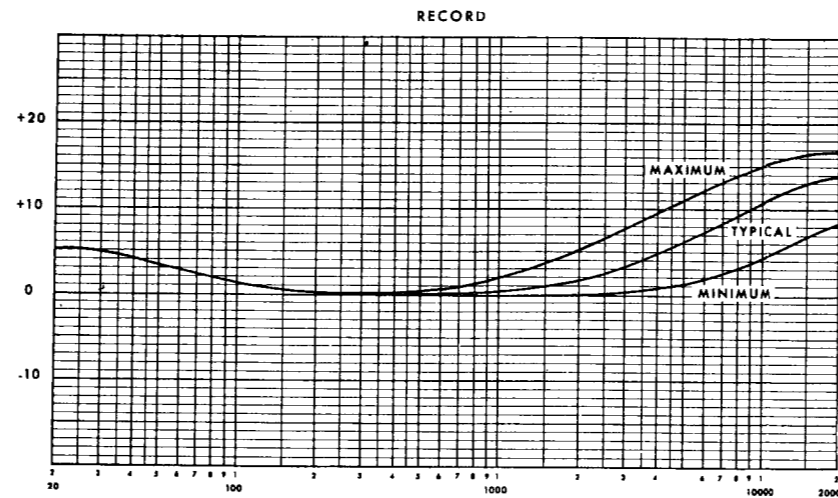


FOR NAB EQUALIZATION		
REF DES	DESCRIPTION	ASSEMBLY
R31	180K	4050404-01
R46	360K, 5%	4050251-02
C11	.018	4050404-01

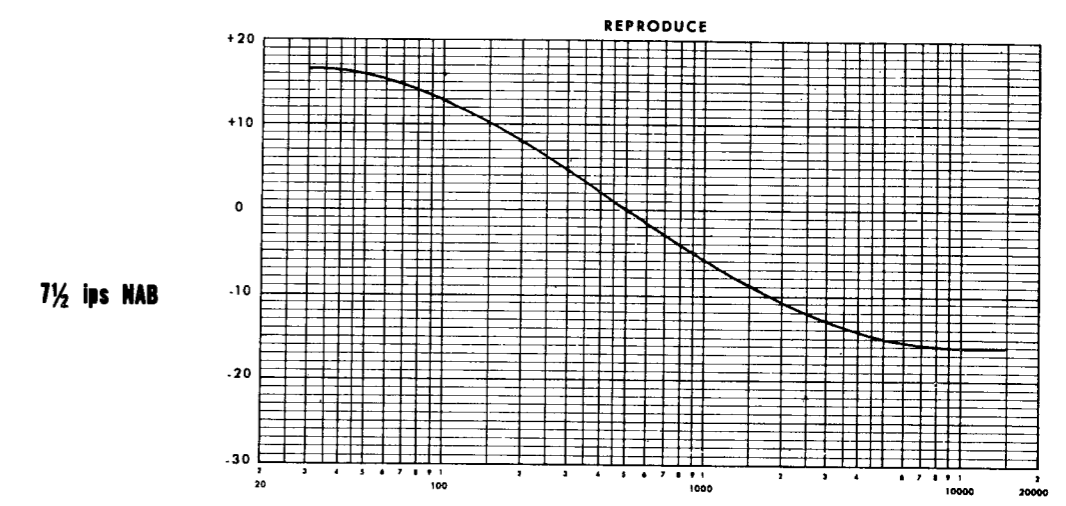
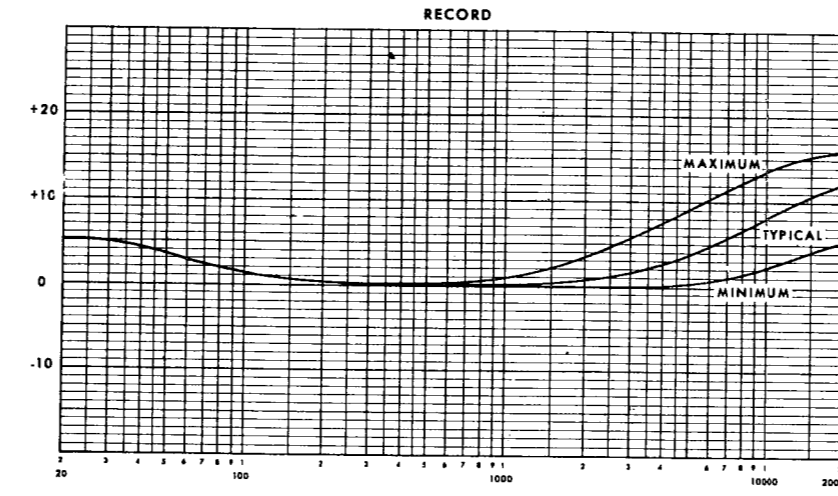
FOR CCR EQUALIZATION		
REF DES	DESCRIPTION	ASSEMBLY
R31	0	4050404-02
R46	2.2 meg	4050251-04
C11	OPEN	4050404-02

LAST REF DES USED	REF DES NOT USED
R62	J10
C34	P1
Q15	C31
CR3	C32
L1	C33
T3	
S4	
VR1	
J11	
M1	
E25	
DS2	
P4	

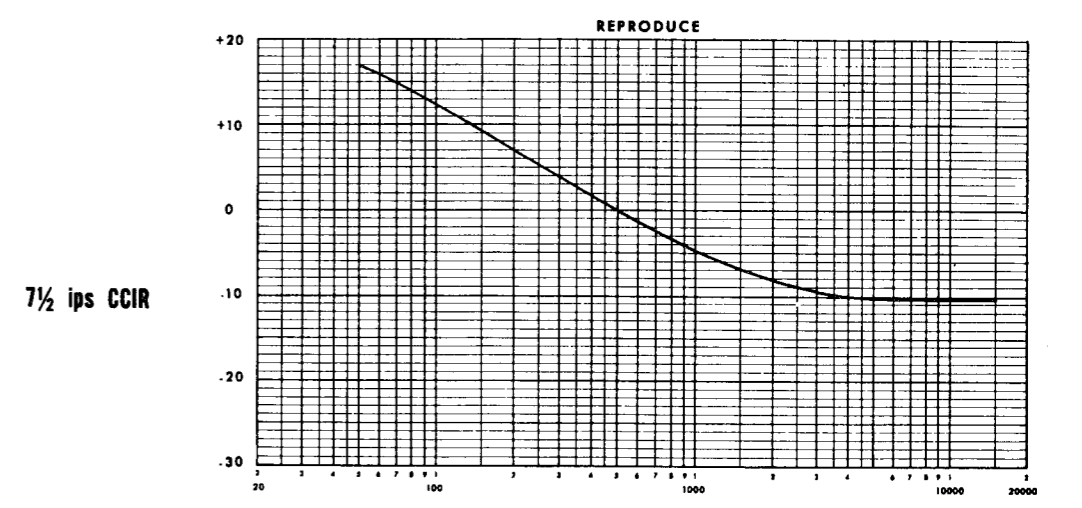
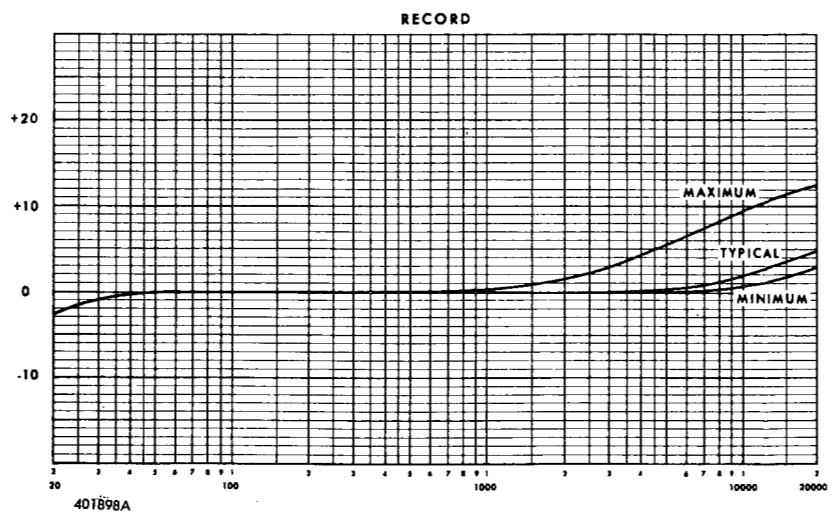
Fig. 7-20. Schematic Diagram, Slave Electronics



3 1/4 ips (200 usec)



7 1/2 ips NAB



7 1/2 ips CCIR

401898A

Fig. 7-21. Response Curves